

Glycogen Synthase Rabbit mAb (AR1336)

Key Features

Host Species:	Rabbit
Reactivity:	Human, Mouse, Rat
Applications:	WB, IHC, IF, IP, ELISA
Isotype:	IgG, Kappa
MW:	84kD (Calculated) 84kD (Observed)

Recommended Dilution Ratios

IHC:	1:200-1000
WB:	1:2000-10000
IF:	1:200-1000
ELISA:	1:5000-20000
IP:	1:50-200

Storage

-15°C to -25°C/1 year (Do not lower than -25°C)

Basic Information

Clonality	Monoclonal
-----------	------------

Immunogen Information

Specificity	Endogenous
-------------	------------

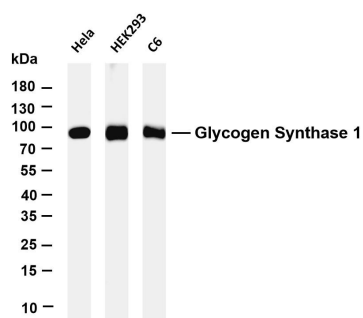
Target Information

Gene name	GYS1
Protein Name	Glycogen [starch] synthase muscle

Organism	Gene ID	UniProt ID
Human	2997	P13807
Mouse	14936	Q9Z1E4
Rat	690987	A2RRU1

Cellular Localization	Cytoplasm
Tissue specificity	Endometrium, Heart, Kidney, Lymph, Muscle, Skin

Validation Data



Various whole cell lysates were separated by 4-20% SDS-PAGE, and the membrane was blotted with anti-Glycogen Synthase 1 antibody. The HRP-conjugated Goat anti-Rabbit IgG(H + L) antibody was used to detect the antibody.

Lane 1: HeLa

Lane 2: HEK293

Lane 3: C6

Predicted band size: 84kDa

Observed band size: 84kDa

For Research Use Only