

## N Cadherin Rabbit mAb (AR1158)

### Key Features

Host Species:	Rabbit
Reactivity:	Human, Mouse, Rat
Applications:	WB, IHC, IF, IP, ELISA
Isotype:	IgG, Kappa
MW:	100kD (Calculated) 130kD (Observed)

### Recommended Dilution Ratios

IHC:	1:500-2000
WB:	1:1000-5000
IF:	1:200-1000
ELISA:	1:5000-20000
IP:	1:50-200

### Storage

-15°C to -25°C/1 year (Do not lower than -25°C)

### Basic Information

Clonality	Monoclonal
-----------	------------

### Immunogen Information

Specificity	Endogenous
-------------	------------

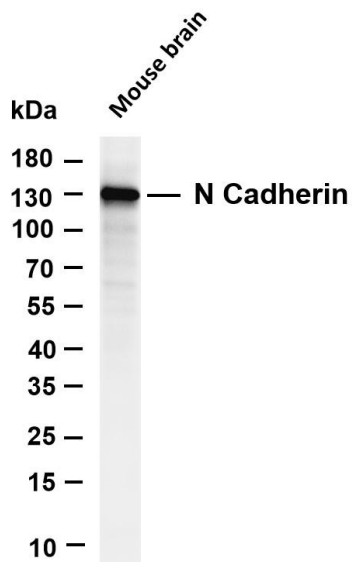
### Target Information

Gene name	CDH2 CDHN NCAD
Protein Name	Cadherin-2 (CDw325) (Neural cadherin) (N-cadherin) (CD antigen CD325)

Organism	Gene ID	UniProt ID
Human	1000	P19022
Mouse	12558	P15116
Rat	83501	Q9Z1Y3

Cellular Localization	Membrane
Tissue specificity	Brain, Epithelium, Liver

## Validation Data

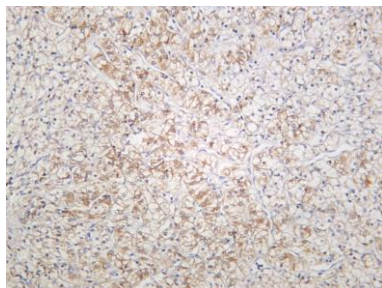


Various whole cell lysates were separated by 4-20% SDS-PAGE, and the membrane was blotted with anti-N Cadherin antibody. The HRP-conjugated Goat anti-Rabbit IgG(H + L) antibody was used to detect the antibody.

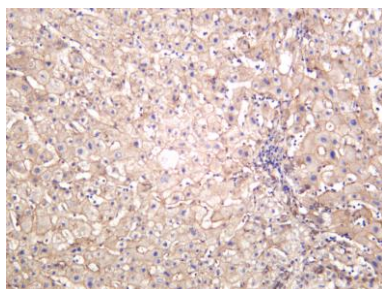
Lane 1: Mouse brain

Predicted band size: 100kDa

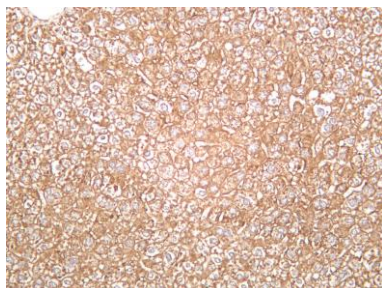
Observed band size: 130kDa



Human kidney carcinoma was stained with anti-N Cadherin rabbit antibody



Human liver was stained with anti-N Cadherin rabbit antibody



Mouse liver was stained with anti-N Cadherin rabbit antibody



Rat liver was stained with anti-N Cadherin rabbit antibody

For Research Use Only