

ATPB Rabbit mAb (AR1160)

Key Features

Host Species:	Rabbit
Reactivity:	Human,Mouse,Rat
Applications:	WB,IHC,IF,IP,ELISA
Isotype:	IgG,Kappa
MW:	57kD (Calculated) 52kD (Observed)

Recommended Dilution Ratios

IHC:	1:200-1000
WB:	1:1000-5000
IF:	1:200-1000
ELISA:	1:5000-20000
IP:	1:50-200

Storage

-15°C to -25°C/1 year (Do not lower than -25°C)

Basic Information

Clonality	Monoclonal
-----------	------------

Immunogen Information

Specificity	Endogenous
-------------	------------

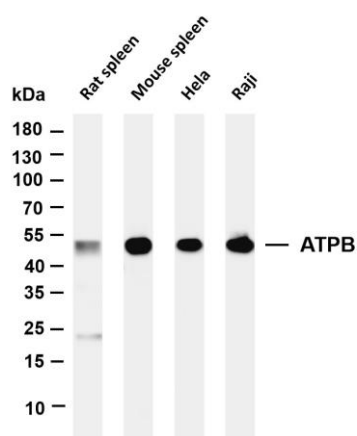
Target Information

Gene name	ATP5B ATPMB ATPSB
Protein Name	ATP synthase subunit beta, mitochondrial (EC 3.6.3.14)

Organism	Gene ID	UniProt ID
Human	506	P06576
Mouse	11947	P56480
Rat	171374	P10719

Cellular Localization	Mitochondrion inner membrane
-----------------------	------------------------------

Validation Data



Various whole cell lysates were separated by 4-20% SDS-PAGE, and the membrane was blotted with anti-ATPB antibody. The HRP-conjugated Goat anti-Rabbit IgG(H + L) antibody was used to detect the antibody.

Lane 1: Rat spleen

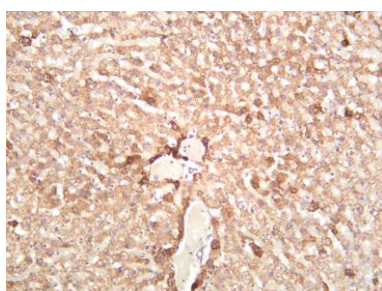
Lane 2: Mouse spleen

Lane 3: Hela

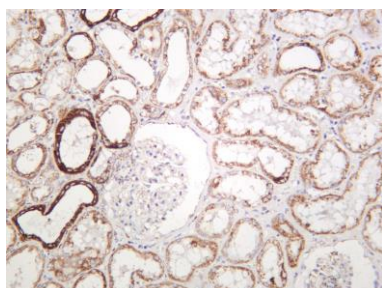
Lane 4: Raji

Predicted band size: 57kDa

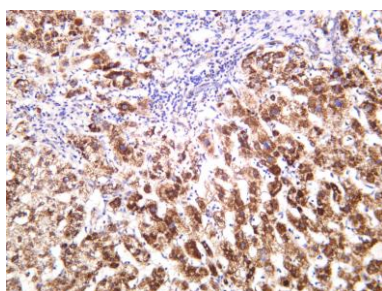
Observed band size: 52kDa



Rat liver was stained with anti-ATPB rabbit antibody



Human kidney was stained with anti-ATPB rabbit antibody



Human liver was stained with anti-ATPB rabbit antibody

For Research Use Only