

# HER2 (Phospho Tyr1221/1222) Rabbit mAb (AR1339)

## Key Features

Host Species:	Rabbit
Reactivity:	Human
Applications:	WB,IF,IP,ELISA
Isotype:	IgG,Kappa
MW:	138kD (Calculated) 185kD (Observed)

## Recommended Dilution Ratios

WB:	1:2000-10000
IF:	1:200-1000
ELISA:	1:5000-20000
IP:	1:50-200

## Storage

-15°C to -25°C/1 year (Do not lower than -25°C)

## Basic Information

Clonality	Monoclonal
-----------	------------

## Immunogen Information

Specificity	The antibody detects endogenous HER2(Phospho AE13) protein.
-------------	---

## Target Information

Gene name	ERBB2 HER2 MLN19 NEU NGL
Protein Name	Her-2

Organism	Gene ID	UniProt ID
Human	2064	P04626
Mouse	13866	P70424
Rat		P06494

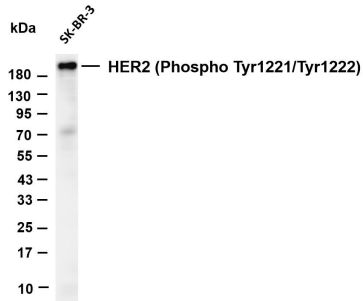
Cellular Localization	[Isoform 1]: Cell membrane; Single-pass type I membrane protein. Early endosome. Cytoplasm, perinuclear region. Nucleus. Translocation to the nucleus requires endocytosis, probably endosomal sorting and is mediated by importin beta-1/KPNB1. Also detected in VPS35-positive endosome-to-TGN retrograde
-----------------------	---

vesicles (PubMed:31138794); [Isoform 2]: Cytoplasm. Nucleus; [Isoform 3]: Cytoplasm. Nucleus.

Expressed in a variety of tumor tissues including primary breast tumors and tumors from small bowel, esophagus, kidney and mouth.

## Tissue specificity

## Validation Data

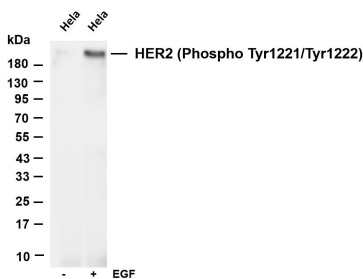


Various whole cell lysates were separated by 4-20% SDS-PAGE, and the membrane was blotted with anti-HER2 (Phospho Tyr1221/Tyr1222) antibody. The HRP-conjugated Goat anti-Rabbit IgG(H + L) antibody was used to detect the antibody.

Lane 1: SK-BR-3

Predicted band size: 138kDa

Observed band size: 185kDa



Various whole cell lysates were separated by 4-20% SDS-PAGE, and the membrane was blotted with anti-HER2 (Phospho Tyr1221/Tyr1222) antibody. The HRP-conjugated Goat anti-Rabbit IgG(H + L) antibody was used to detect the antibody.

Lane 1: HeLa

Lane 2: HeLa serum starved for 4 hours and treated with EGF(200 ng/mL) for 15 minutes

Predicted band size: 138kDa

Observed band size: 185kDa

For Research Use Only