

Cytokeratin 8 Rabbit mAb (AR1159)

Key Features

Host Species:	Rabbit
Reactivity:	Human,Mouse,Rat
Applications:	WB,IHC,IF,IP,ELISA
Isotype:	IgG,Kappa
MW:	54kD (Calculated) 54kD (Observed)

Recommended Dilution Ratios

IHC:	1:200-1000
WB:	1:1000-5000
IF:	1:200-1000
ELISA:	1:5000-20000
IP:	1:50-200

Storage

-15°C to -25°C/1 year (Do not lower than -25°C)

Basic Information

Clonality	Monoclonal
-----------	------------

Immunogen Information

Specificity	Endogenous
-------------	------------

Target Information

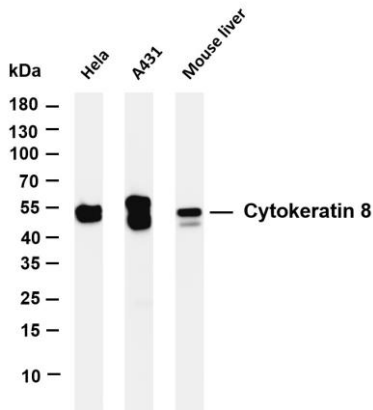
Gene name	KRT8 CYK8
Protein Name	Keratin, type II cytoskeletal 8

Organism	Gene ID	UniProt ID
Human	3856	P05787
Mouse	16691	P11679
Rat	25626	Q10758

Cellular Localization	Cytoplasm, Nucleus, nucleoplasm, Nucleus matrix
Tissue specificity	Observed in muscle fibers accumulating in the costameres of myoplasm at the sarcolemma membrane in structures that contain

dystrophin and spectrin. Expressed in gingival mucosa and hard palate of the oral cavity.

Validation Data



Various whole cell lysates were separated by 4-20% SDS-PAGE, and the membrane was blotted with anti-Cytokeratin 8 antibody. The HRP-conjugated Goat anti-Rabbit IgG(H + L) antibody was used to detect the antibody.

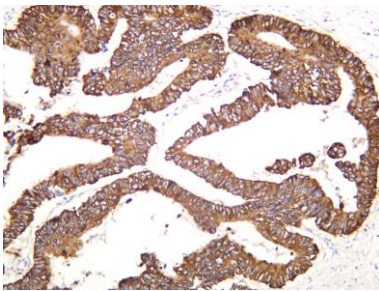
Lane 1: HeLa

Lane 2: A431

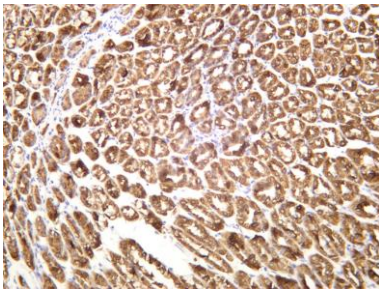
Lane 3: Mouse liver

Predicted band size: 54kDa

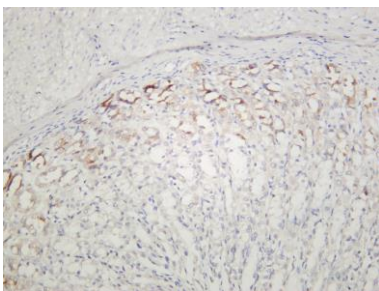
Observed band size: 54kDa



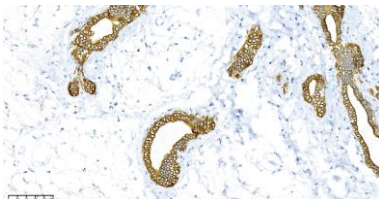
Human colon carcinoma was stained with anti-Cytokeratin 8 rabbit antibody



Mouse stomach was stained with anti-Cytokeratin 8 rabbit antibody



Rat stomach was stained with anti-Cytokeratin 8 rabbit antibody



Mouse mammary gland was stained with anti-Cytokeratin 8 Rabbit antibody