

Peroxioredoxin 1 Rabbit mAb (AR1162)

Key Features

Host Species:	Rabbit
Reactivity:	Human,Mouse,Rat
Applications:	WB,IHC,IF,IP,ELISA
Isotype:	IgG,Kappa
MW:	22kD (Calculated) 26kD (Observed)

Recommended Dilution Ratios

IHC:	1:200-1000
WB:	1:1000-5000
IF:	1:200-1000
ELISA:	1:5000-20000
IP:	1:50-200

Storage

-15°C to -25°C/1 year (Do not lower than -25°C)

Basic Information

Clonality	Monoclonal
-----------	------------

Immunogen Information

Specificity	Endogenous
-------------	------------

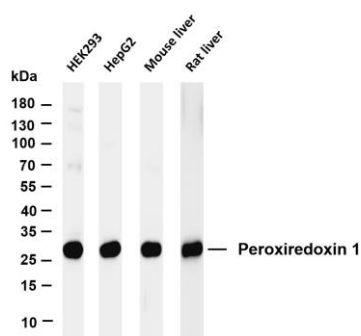
Target Information

Gene name	PRDX1
Protein Name	Peroxioredoxin-1

Organism	Gene ID	UniProt ID
Human	5052	Q06830
Mouse	18477	P35700
Rat	117254	Q63716

Cellular Localization	Cytoplasm
Tissue specificity	Brain, Cajal-Retzius cell, Fetal brain cortex, Urinary bladder

Validation Data



Various whole cell lysates were separated by 4-20% SDS-PAGE, and the membrane was blotted with anti-Peroxiredoxin 1 antibody. The HRP conjugated Goat anti-Rabbit IgG(H + L) antibody was used to detect the antibody.

Lane 1: HEK293

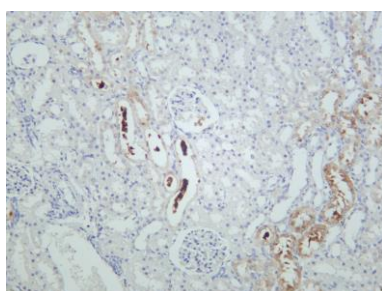
Lane 2: HepG2

Lane 3: Mouse liver

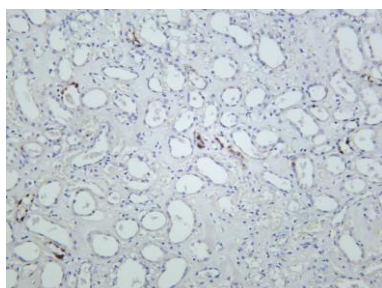
Lane 4: Rat liver

Predicted band size: 22kDa

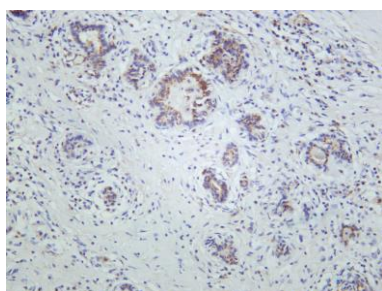
Observed band size: 26kDa



Rat kidney was stained with anti-Peroxiredoxin 1 rabbit antibody



Human kidney was stained with anti-Peroxiredoxin 1 rabbit antibody



Human thyroid was stained with anti-Peroxiredoxin 1 rabbit antibody

For Research Use Only