

## p16 INK4A Rabbit mAb (AR1165)

### Key Features

|               |                                      |
|---------------|--------------------------------------|
| Host Species: | Rabbit                               |
| Reactivity:   | Human, Mouse, Rat                    |
| Applications: | WB, IF, IP, ELISA                    |
| Isotype:      | IgG, Kappa                           |
| MW:           | 17kD (Calculated)<br>17kD (Observed) |

### Recommended Dilution Ratios

|        |              |
|--------|--------------|
| WB:    | 1:1000-5000  |
| IF:    | 1:200-1000   |
| ELISA: | 1:5000-20000 |
| IP:    | 1:50-200     |

### Storage

-15°C to -25°C/1 year (Do not lower than -25°C)

### Basic Information

|           |            |
|-----------|------------|
| Clonality | Monoclonal |
|-----------|------------|

### Immunogen Information

|             |            |
|-------------|------------|
| Specificity | Endogenous |
|-------------|------------|

### Target Information

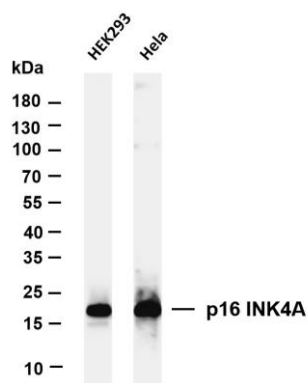
|              |                   |
|--------------|-------------------|
| Gene name    | CDKN2A CDKN2 MTS1 |
| Protein Name | p16 INK           |

| Organism | Gene ID | UniProt ID |
|----------|---------|------------|
| Human    | 1029    | P42771     |

|                       |                    |
|-----------------------|--------------------|
| Cellular Localization | Cytoplasm, Nucleus |
|-----------------------|--------------------|

|                    |   |
|--------------------|---|
| Tissue specificity | Widely expressed but not detected in brain or skeletal muscle.<br>Isoform 3 is pancreas specific. |
|--------------------|---|

## Validation Data



Various whole cell lysates were separated by 4-20% SDS-PAGE, and the membrane was blotted with anti-p16 INK4A antibody. The HRP-conjugated Goat anti-Rabbit IgG(H + L) antibody was used to detect the antibody.

Lane 1: HEK293

Lane 2: HeLa

Predicted band size: 17kDa

Observed band size: 17kDa

For Research Use Only