

ATP5A Rabbit mAb (AR1167)

Key Features

Host Species:	Rabbit
Reactivity:	Human, Mouse, Rat
Applications:	WB, IHC, IF, IP, ELISA
Isotype:	IgG, Kappa
MW:	60kD (Calculated) 55kD (Observed)

Recommended Dilution Ratios

IHC:	1:200-1000
WB:	1:2000-10000
IF:	1:200-1000
ELISA:	1:5000-20000
IP:	1:50-200

Storage

-15°C to -25°C/1 year (Do not lower than -25°C)

Basic Information

Clonality	Monoclonal
-----------	------------

Immunogen Information

Specificity	Endogenous
-------------	------------

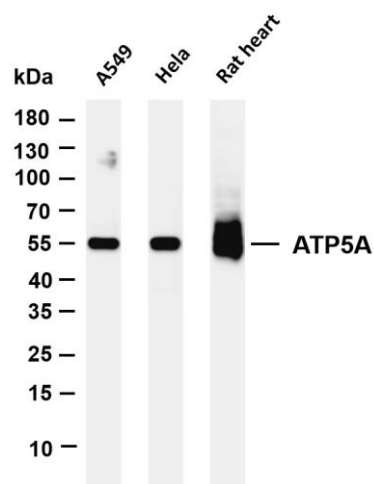
Target Information

Gene name	ATP5A1
Protein Name	ATP synthase subunit alpha mitochondrial

Organism	Gene ID	UniProt ID
Human	498	P25705
Mouse	11946	Q03265
Rat	65262	P15999

Cellular Localization	Mitochondrion
Tissue specificity	Fetal lung, heart, liver, gut and kidney. Expressed at higher levels in the fetal brain, retina and spinal cord.

Validation Data



Various whole cell lysates were separated by 4-20% SDS-PAGE, and the membrane was blotted with anti-ATP5A antibody. The HRP-conjugated Goat anti-Rabbit IgG(H + L) antibody was used to detect the antibody.

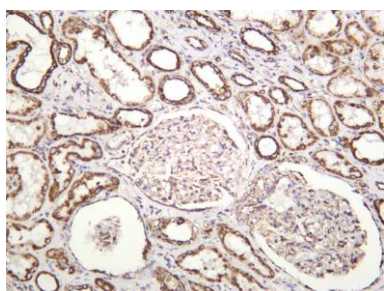
Lane 1: A549

Lane 2: HeLa

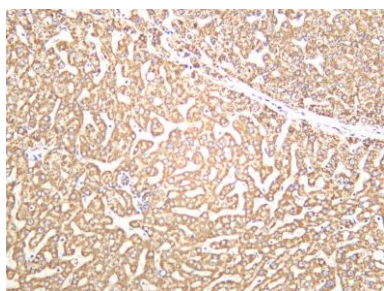
Lane 3: Rat heart

Predicted band size: 60kDa

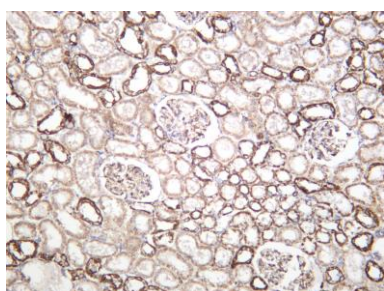
Observed band size: 55kDa



Human kidney was stained with anti-ATP5A rabbit antibody



Human liver was stained with anti-ATP5A rabbit antibody



Rat kidney was stained with anti-ATP5A rabbit antibody

For Research Use Only