

Aurora B Rabbit mAb (AR1166)

Key Features

Host Species:	Rabbit
Reactivity:	Human
Applications:	WB,IHC,IF,IP,ELISA
Isotype:	IgG,Kappa
MW:	39kD (Calculated) 39kD (Observed)

Recommended Dilution Ratios

IHC:	1:500-1000
WB:	1:1000-5000
IF:	1:200-1000
ELISA:	1:5000-20000
IP:	1:50-200

Storage

-15°C to -25°C/1 year (Do not lower than -25°C)

Basic Information

Clonality	Monoclonal
-----------	------------

Immunogen Information

Specificity	Endogenous
-------------	------------

Target Information

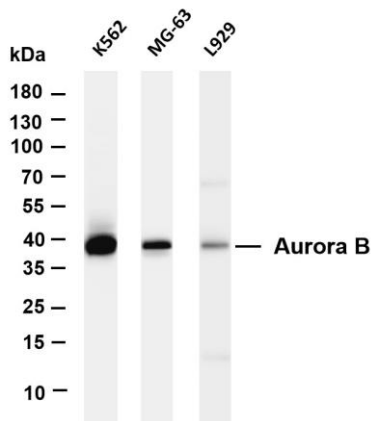
Gene name	AURKB
Protein Name	Aurora kinase B, Aurora B

Organism	Gene ID	UniProt ID
Human	9212	Q96GD4
Mouse	20877	O70126
Rat	114592	O55099

Cellular Localization	Nucleus
Tissue specificity	High level expression seen in the thymus. It is also expressed in the spleen, lung, testis, colon, placenta and fetal liver. Expressed during

S and G2/M phase and expression is up regulated in cancer cells during M phase; [Isoform 3]: Not expressed in normal liver, high expression in metastatic liver.

Validation Data



Various whole cell lysates were separated by 4-20% SDS-PAGE, and the membrane was blotted with anti-Aurora B antibody. The HRP-conjugated Goat anti-Rabbit IgG(H + L) antibody was used to detect the antibody.

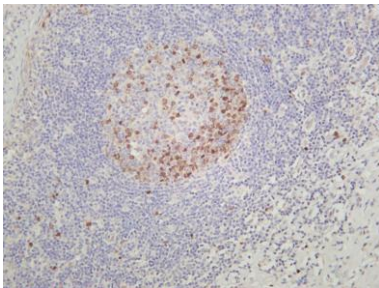
Lane 1: K562

Lane 2: MG-63

Lane 3: L929

Predicted band size: 39kDa

Observed band size: 39kDa



Human tonsil was stained with anti-Aurora B rabbit antibody

For Research Use Only