

Wilms Tumor Rabbit mAb (AR1169)

Key Features

Host Species:	Rabbit
Reactivity:	Human, Mouse, Rat
Applications:	WB, IHC, IF, IP, ELISA
Isotype:	IgG, Kappa
MW:	49kD (Calculated) 55kD (Observed)

Recommended Dilution Ratios

IHC:	1:1000-5000
WB:	1:1000-5000
IF:	1:200-1000
ELISA:	1:5000-20000
IP:	1:50-200

Storage

-15°C to -25°C/1 year (Do not lower than -25°C)

Basic Information

Clonality	Monoclonal
-----------	------------

Immunogen Information

Specificity	Endogenous
-------------	------------

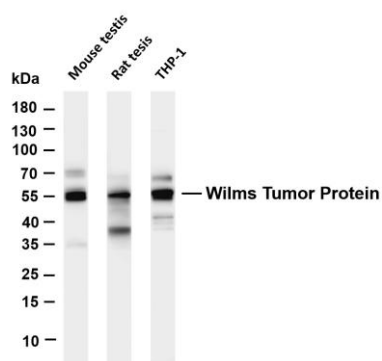
Target Information

Gene name	WT1
Protein Name	Wilms tumor protein (WT33)

Organism	Gene ID	UniProt ID
Human	7490	P19544

Cellular Localization	Nucleus
Tissue specificity	Expressed in the kidney and a subset of hematopoietic cells.

Validation Data



Various whole cell lysates were separated by 4-20% SDS-PAGE, and the membrane was blotted with anti-Wilms Tumor Protein antibody. The HRP conjugated Goat anti-Rabbit IgG(H + L) antibody was used to detect the antibody.

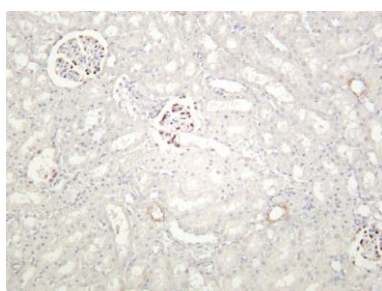
Lane 1: Mouse testis

Lane 2: Rat testis

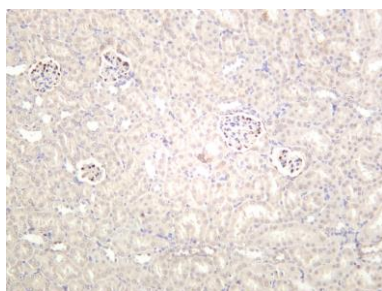
Lane 3: THP-1

Predicted band size: 49kDa

Observed band size: 55kDa



Rat kidney was stained with anti-Wilms Tumor Protein rabbit antibody



Mouse kidney was stained with anti-Wilms Tumor Protein rabbit antibody

For Research Use Only