

## β Catenin Rabbit mAb (AR1168)

### Key Features

Host Species:	Rabbit
Reactivity:	Human, Mouse, Rat
Applications:	WB, IHC, IF, IP, ELISA
Isotype:	IgG, Kappa
MW:	85kD (Calculated) 96kD (Observed)

### Recommended Dilution Ratios

IHC:	1:1000-5000
WB:	1:1000-5000
IF:	1:200-1000
ELISA:	1:5000-20000
IP:	1:50-200

### Storage

-15°C to -25°C/1 year (Do not lower than -25°C)

### Basic Information

Clonality	Monoclonal
-----------	------------

### Immunogen Information

Specificity	Endogenous
-------------	------------

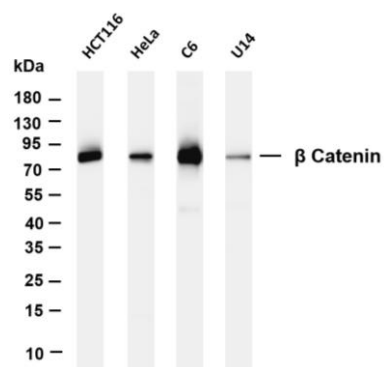
### Target Information

Gene name	CTNNB1 CTNNB
Protein Name	Catenin-β; Catenin beta-1

Organism	Gene ID	UniProt ID
Human	1499	P35222

Cellular Localization	Cytoplasm, Membrane
Tissue specificity	Expressed in several hair follicle cell types: basal and peripheral matrix cells, and cells of the outer and inner root sheaths. Expressed in colon. Present in cortical neurons (at protein level). Expressed in breast cancer tissues (at protein level) (PubMed:29367600).

## Validation Data



Various whole cell lysates were separated by 4-20% SDS-PAGE, and the membrane was blotted with anti- $\beta$  Catenin antibody. The HRP-conjugated Goat anti-Rabbit IgG(H + L) antibody was used to detect the antibody.

Lane 1: HCT116

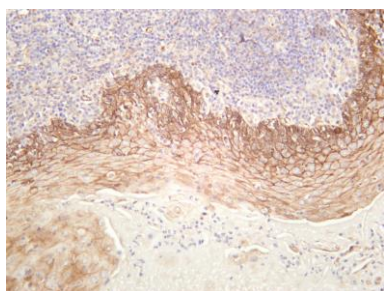
Lane 2: HeLa

Lane 3: C6

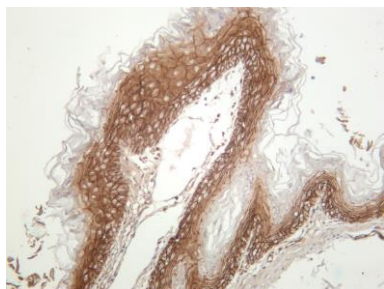
Lane 4: U14

Predicted band size: 85kDa

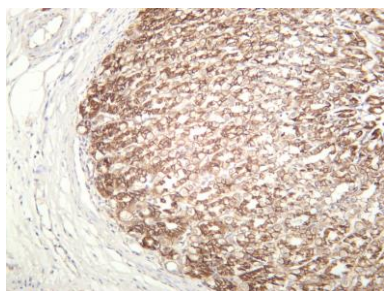
Observed band size: 85kDa



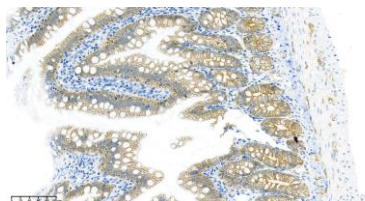
Human tonsil was stained with anti- $\beta$  Catenin rabbit antibody



Mouse stomach was stained with anti- $\beta$  Catenin rabbit antibody



Rat stomach was stained with anti- $\beta$  Catenin rabbit antibody



Rat jejunum was stained with anti- $\beta$  Catenin Rabbit antibody