

Paxillin Rabbit mAb (AR1170)

Key Features

Host Species:	Rabbit
Reactivity:	Human, Mouse, Rat
Applications:	WB, IHC, IF, IP, ELISA
Isotype:	IgG, Kappa
MW:	65kD (Calculated) 65kD (Observed)

Recommended Dilution Ratios

IHC:	1:1000-4000
WB:	1:1000-5000
IF:	1:200-1000
ELISA:	1:5000-20000
IP:	1:50-200

Storage

-15°C to -25°C/1 year (Do not lower than -25°C)

Basic Information

Clonality	Monoclonal
-----------	------------

Immunogen Information

Specificity	Endogenous
-------------	------------

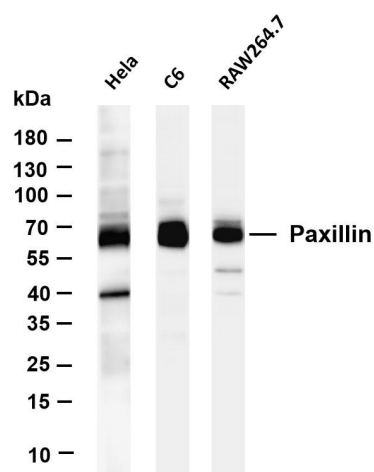
Target Information

Gene name	PXN
Protein Name	Paxillin

Organism	Gene ID	UniProt ID
Human	5829	P49023
Mouse	19303	Q8VI36
Rat	360820	Q66H76

Cellular Localization	Cytoplasm
Tissue specificity	Brain, Epithelium, Lung, Placenta, T-cell, Uterus

Validation Data



Various whole cell lysates were separated by 4-20% SDS-PAGE, and the membrane was blotted with anti-Paxillin antibody. The HRP-conjugated Goat anti-Rabbit IgG(H + L) antibody was used to detect the antibody.

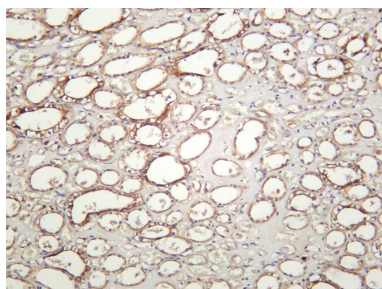
Lane 1: HeLa

Lane 2: C6

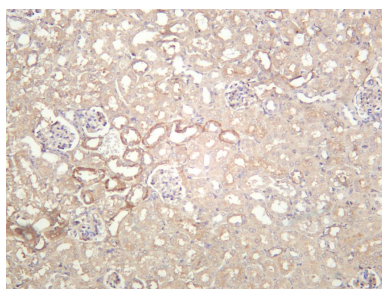
Lane 3: RAW264.7

Predicted band size: 65kDa

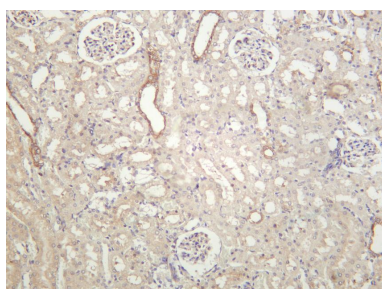
Observed band size: 65kDa



Human kidney was stained with anti-Paxillin rabbit antibody



Mouse kidney was stained with anti-Paxillin rabbit antibody



Rat kidney was stained with anti-Paxillin rabbit antibody

For Research Use Only