

VWF Rabbit mAb (AR1175)

Key Features

Host Species:	Rabbit
Reactivity:	Human,Mouse,Rat
Applications:	WB,IHC,IF,IP,ELISA
Isotype:	IgG,Kappa
MW:	309kD (Calculated) 280kD (Observed)

Recommended Dilution Ratios

IHC:	1:1000-4000
WB:	1:2000-10000
IF:	1:200-1000
ELISA:	1:5000-20000
IP:	1:50-200

Storage

-15°C to -25°C/1 year (Do not lower than -25°C)

Basic Information

Clonality	Monoclonal
-----------	------------

Immunogen Information

Specificity	Endogenous
-------------	------------

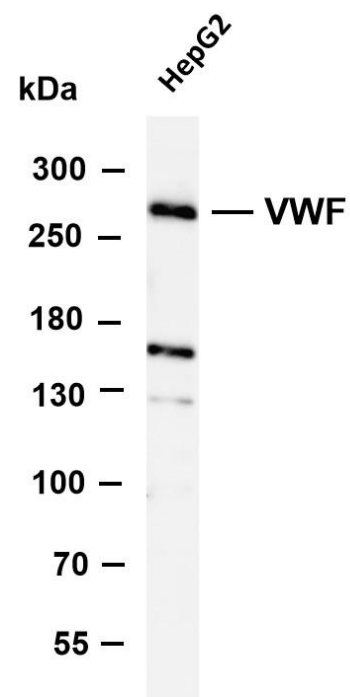
Target Information

Gene name	VWF F8VWF
Protein Name	von Willebrand factor (vWF) [Cleaved into: von Willebrand antigen 2 (von Willebrand antigen II)]

Organism	Gene ID	UniProt ID
Human	7450	P04275
Mouse		Q8CIZ8
Rat		Q62935

Cellular Localization	Secreted
Tissue specificity	Plasma

Validation Data

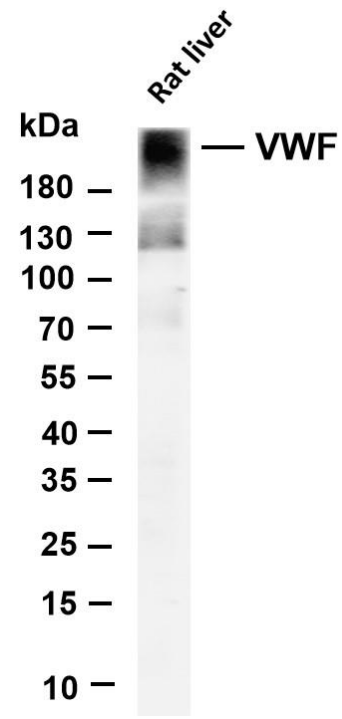


Various whole cell lysates were separated by 4-8% SDS-PAGE, and the membrane was blotted with anti- VWF antibody. The HRP-conjugated Goat anti-Rabbit IgG(H + L) antibody was used to detect the antibody.

Lane 1: HepG2

Predicted band size: 309kDa

Observed band size: 280kDa

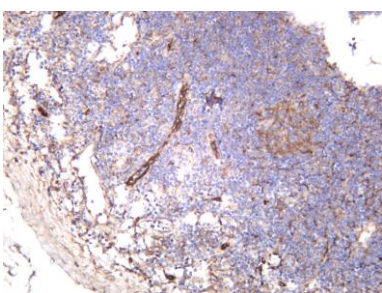


Various whole cell lysates were separated by 4-20% SDS-PAGE, and the membrane was blotted with anti-VWF antibody. The HRP-conjugated Goat anti-Rabbit IgG(H + L) antibody was used to detect the antibody.

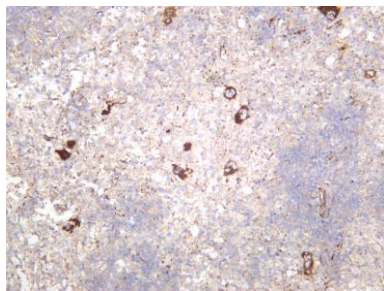
Lane 1: Rat liver

Predicted band size: 309kDa

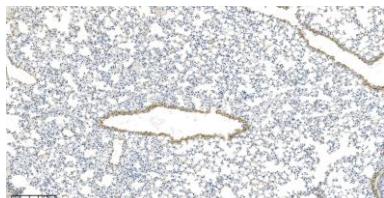
Observed band size: 280kDa



Human tonsil was stained with anti-VWF rabbit antibody



Rat spleen was stained with anti-VWF rabbit antibody



Mouse lung was stained with anti-VWF Rabbit antibody

For Research Use Only