

# Claudin 1 Rabbit mAb (AR1178)

## Key Features

Host Species:	Rabbit
Reactivity:	Human,Mouse,Rat
Applications:	WB,IHC,IF,IP,ELISA
Isotype:	IgG,Kappa
MW:	23kD (Calculated) 19kD (Observed)

## Recommended Dilution Ratios

IHC:	1:200-1000
WB:	1:1000-5000
IF:	1:200-1000
ELISA:	1:5000-20000
IP:	1:50-200

## Storage

-15°C to -25°C/1 year (Do not lower than -25°C)

## Basic Information

Clonality	Monoclonal
-----------	------------

## Immunogen Information

Specificity	Endogenous
-------------	------------

## Target Information

Gene name	CLDN1
-----------	-------

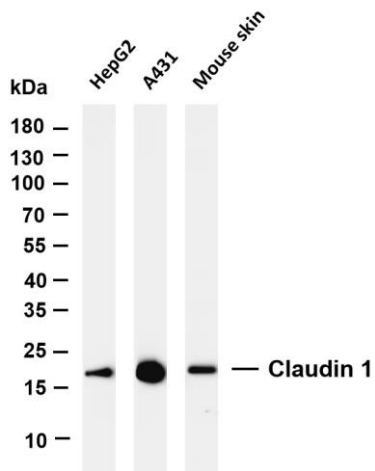
Protein Name	Claudin-1
--------------	-----------

Organism	Gene ID	UniProt ID
Human	9076	O95832
Mouse	12737	O88551
Rat	65129	P56745

Cellular Localization	Membrane
-----------------------	----------

Tissue specificity	Strongly expressed in liver and kidney. Expressed in heart, brain, spleen, lung and testis.
--------------------	---

## Validation Data



Various whole cell lysates were separated by 4-20% SDS-PAGE, and the membrane was blotted with anti-Claudin 1 antibody. The HRP-conjugated Goat anti-Rabbit IgG(H + L) antibody was used to detect the antibody.

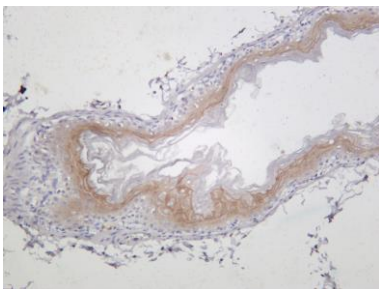
Lane 1: HepG2

Lane 2: A431

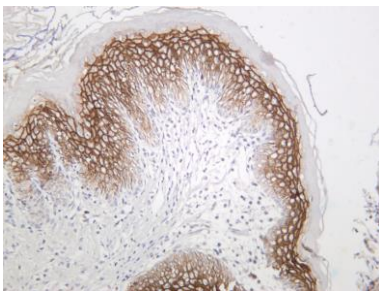
Lane 3: Mouse skin

Predicted band size: 23kDa

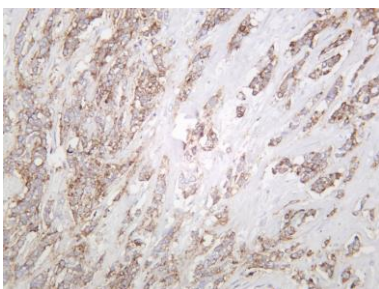
Observed band size: 19kDa



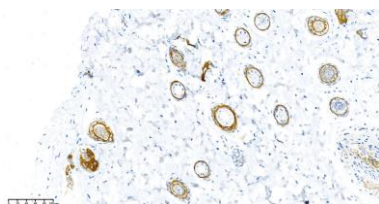
Mouse stomach was stained with anti-Claudin 1 rabbit antibody



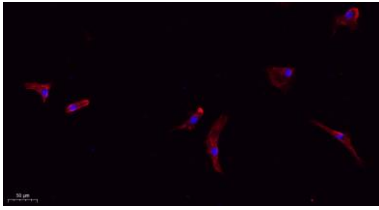
Rat stomach was stained with anti-Claudin 1 rabbit antibody



Human breast was stained with anti-Claudin 1 rabbit antibody



Mouse mammary gland was stained with anti-Claudin 1 Rabbit antibody



Immunofluorescence analysis of A549.

1. primary Antibody(red) was diluted at 1:200(4°C overnight).
2. Goat Anti Rabbit IgG (H&L) - Alexa Fluor 594 Secondary antibody was diluted at 1:1000(room temperature, 50min).
3. DAPI (blue) 10min.

For Research Use Only