

Histone H2A Rabbit mAb (AR1179)

Key Features

Host Species:	Rabbit
Reactivity:	Human,Mouse,Rat
Applications:	WB,IHC,IF,IP,ELISA
Isotype:	IgG,Kappa
MW:	14kD (Calculated) 17kD (Observed)

Recommended Dilution Ratios

IHC:	1:200-1000
WB:	1:1000-5000
IF:	1:200-1000
ELISA:	1:5000-20000
IP:	1:50-200

Storage

-15°C to -25°C/1 year (Do not lower than -25°C)

Basic Information

Clonality	Monoclonal
-----------	------------

Immunogen Information

Specificity	Endogenous
-------------	------------

Target Information

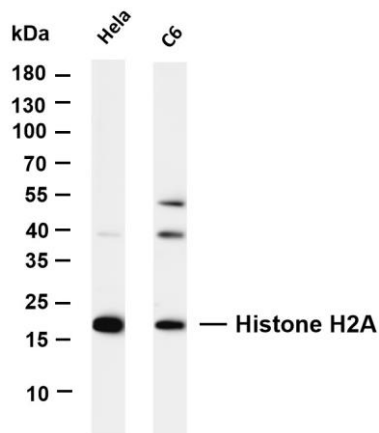
Gene name	HIST1H2AB
Protein Name	Histone H2A type 1-B/E

Organism	Gene ID	UniProt ID
Human	8329; 8332; 8336;	P0C0S8; P04908; P20671; Q96KK5; Q6FI13; Q7L7L0
	8969; 3012; 8335;	
	3013;	
	85235; 723790;	
Mouse	8337; 92815	
	319164; 319168	
Rat		P02262

Cellular Localization

Tissue specificity

Validation Data



Nucleus

Bone, Brain, Colon, Eye, Lymph, PCR rescued clones, Placenta, Spleen

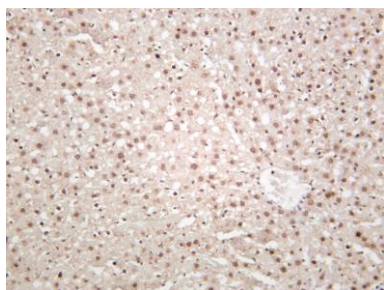
Various whole cell lysates were separated by 4-20% SDS-PAGE, and the membrane was blotted with anti-Histone H2A antibody. The HRP-conjugated Goat anti-Rabbit IgG(H + L) antibody was used to detect the antibody.

Lane 1: HeLa

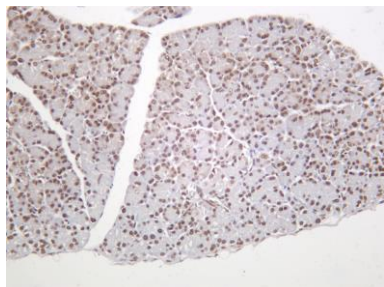
Lane 2: C6

Predicted band size: 14kDa

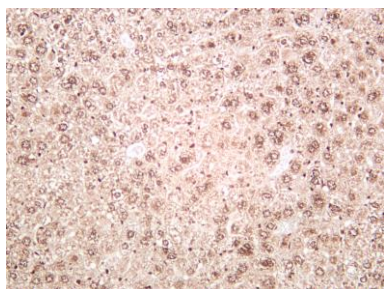
Observed band size: 17kDa



Rat liver was stained with anti-Histone H2A rabbit antibody



Rat pancreas was stained with anti-Histone H2A rabbit antibody



Mouse liver was stained with anti-Histone H2A rabbit antibody

For Research Use Only