

ATG7 Rabbit mAb (AR1177)

Key Features

Host Species:	Rabbit
Reactivity:	Human,Mouse,Rat
Applications:	WB,IHC,IF,IP,ELISA
Isotype:	IgG,Kappa
MW:	78kD (Calculated) 78kD (Observed)

Recommended Dilution Ratios

IHC:	1:200-1000
WB:	1:1000-5000
IF:	1:200-1000
ELISA:	1:5000-20000
IP:	1:50-200

Storage

-15°C to -25°C/1 year (Do not lower than -25°C)

Basic Information

Clonality	Monoclonal
-----------	------------

Immunogen Information

Specificity	Endogenous
-------------	------------

Target Information

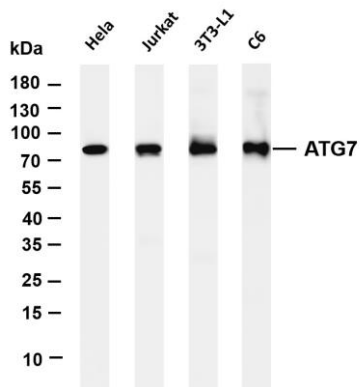
Gene name	ATG7 APG7L
Protein Name	Ubiquitin-like modifier-activating enzyme ATG7 (ATG12-activating enzyme E1 ATG7) (Autophagy-related protein 7) (APG7-like) (hAGP7) (Ubiquitin-activating enzyme E1-like protein)

Organism	Gene ID	UniProt ID
Human	10533	O95352
Mouse		Q9D906
Rat		Q641Y5

Cellular Localization	Cytoplasm
-----------------------	-----------

Tissue specificity

Validation Data



Widely expressed, especially in kidney, liver, lymph nodes and bone marrow.

Various whole cell lysates were separated by 4-20% SDS-PAGE, and the membrane was blotted with anti- ATG7 antibody. The HRP-conjugated Goat anti-Rabbit IgG(H + L) antibody was used to detect the antibody.

Lane 1: HeLa

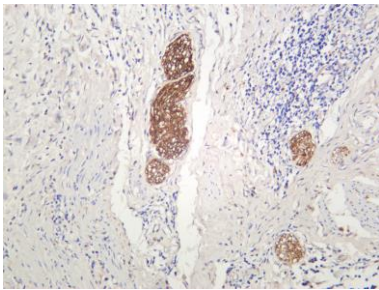
Lane 2: Jurkat

Lane 3: 3T3-L1

Lane 4: C6

Predicted band size: 78kDa

Observed band size: 78kDa



Human cervical carcinoma was stained with anti-ATG7 rabbit antibody

For Research Use Only