

PAK1 Rabbit mAb (AR1180)

Key Features

Host Species:	Rabbit
Reactivity:	Human,Mouse,Rat
Applications:	WB,IHC,IF,IP,ELISA
Isotype:	IgG,Kappa
MW:	61kD (Calculated) 61kD (Observed)

Recommended Dilution Ratios

IHC:	1:200-1000
WB:	1:1000-5000
IF:	1:200-1000
ELISA:	1:5000-20000
IP:	1:50-200

Storage

-15°C to -25°C/1 year (Do not lower than -25°C)

Basic Information

Clonality	Monoclonal
-----------	------------

Immunogen Information

Specificity	Endogenous
-------------	------------

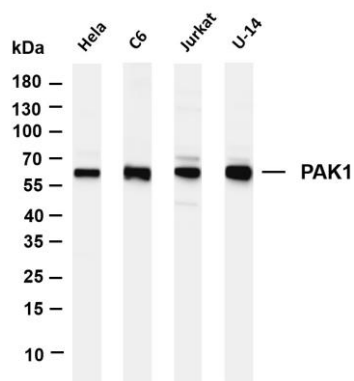
Target Information

Gene name	PAK1
Protein Name	Serine/threonine-protein kinase PAK 1

Organism	Gene ID	UniProt ID
Human	5058	Q13153
Mouse		O88643
Rat	29431	P35465

Cellular Localization	Cytoplasm
Tissue specificity	Overexpressed in gastric cancer cells and tissues (at protein level) (PubMed:25766321).

Validation Data



Various whole cell lysates were separated by 4-20% SDS-PAGE, and the membrane was blotted with anti-PAK1 antibody. The HRP-conjugated Goat anti-Rabbit IgG(H + L) antibody was used to detect the antibody.

Lane 1: HeLa

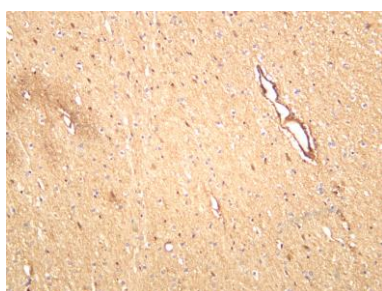
Lane 2: C6

Lane 3: Jurkat

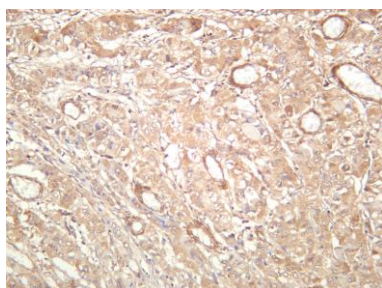
Lane 4: U-14

Predicted band size: 61kDa

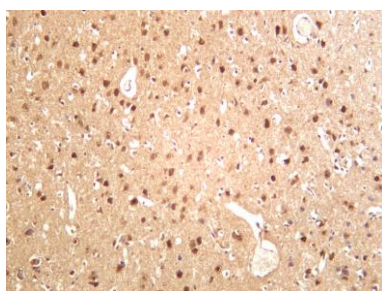
Observed band size: 61kDa



Human brain was stained with anti-PAK1 rabbit antibody



Human hepatocellular carcinoma was stained with anti-PAK1 rabbit antibody



Rat brain was stained with anti-PAK1 rabbit antibody

For Research Use Only