

# Transferrin Receptor Rabbit mAb (AR1187)

## Key Features

Host Species:	Rabbit
Reactivity:	Human,Mouse,Rat
Applications:	WB,IHC,IF,IP,ELISA
Isotype:	IgG,Kappa
MW:	85kD (Calculated) 85kD (Observed)

## Recommended Dilution Ratios

IHC:	1:200-1000
WB:	1:1000-5000
IF:	1:200-1000
ELISA:	1:5000-20000
IP:	1:50-200

## Storage

-15°C to -25°C/1 year (Do not lower than -25°C)

## Basic Information

Clonality	Monoclonal
-----------	------------

## Immunogen Information

Specificity	Endogenous
-------------	------------

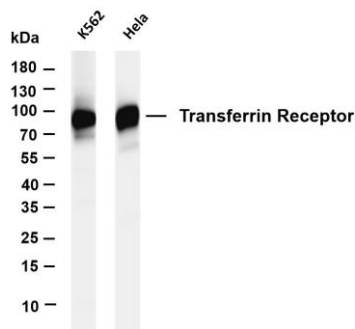
## Target Information

Gene name	TFRC
Protein Name	Transferrin receptor protein 1 (TR) (TfR) (TfR1) (Trfr) (T9) (p90) (CD antigen CD71) [Cleaved into: Transferrin receptor protein 1, serum form (sTfR)]

Organism	Gene ID	UniProt ID
Human	7037	P02786
Mouse	22042	Q62351
Rat		Q99376

Cellular Localization	Membrane
-----------------------	----------

## Validation Data



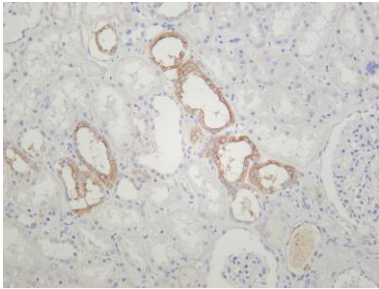
Various whole cell lysates were separated by 4-20% SDS-PAGE, and the membrane was blotted with anti-Transferrin Receptor antibody. The HRP conjugated Goat anti-Rabbit IgG(H + L) antibody was used to detect the antibody.

Lane 1: K562

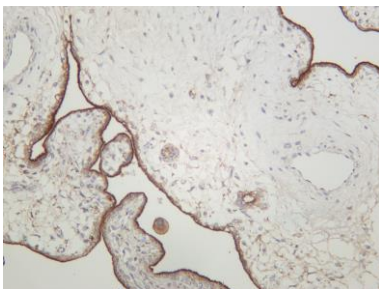
Lane 2: HeLa

Predicted band size: 85kDa

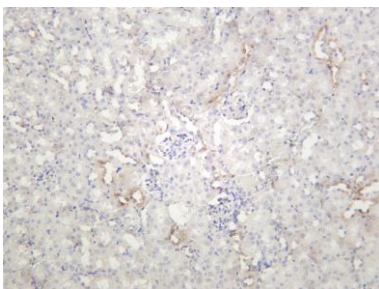
Observed band size: 85kDa



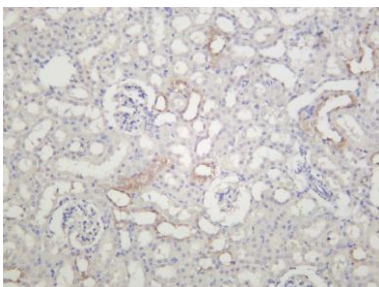
Human kidney was stained with anti-Transferrin Receptor rabbit antibody



Human placenta was stained with anti-Transferrin Receptor rabbit antibody



Mouse kidney was stained with anti-Transferrin Receptor rabbit antibody



Rat kidney was stained with anti-Transferrin Receptor rabbit antibody