

CD38 Rabbit mAb (AR1188)

Key Features

Host Species:	Rabbit
Reactivity:	Mouse,Rat
Applications:	WB,IHC,IF,IP,ELISA
Isotype:	IgG,Kappa
MW:	34kD (Calculated) 45kD (Observed)

Recommended Dilution Ratios

IHC:	1:200-1000
WB:	1:1000-5000
IF:	1:200-1000
ELISA:	1:5000-20000
IP:	1:50-200

Storage

-15°C to -25°C/1 year (Do not lower than -25°C)

Basic Information

Clonality	Monoclonal
-----------	------------

Immunogen Information

Specificity	Endogenous
-------------	------------

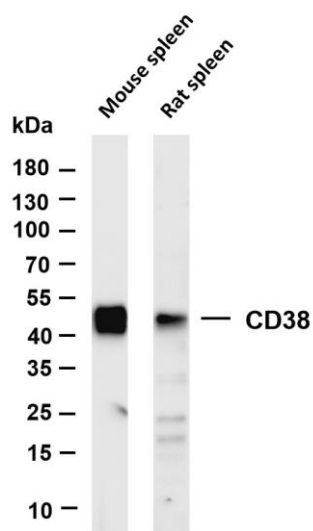
Target Information

Gene name	CD38
Protein Name	ADP-ribosyl cyclase 1

Organism	Gene ID	UniProt ID
Human	952	P28907
Mouse		P56528

Cellular Localization	Membrane
Tissue specificity	Expressed at high levels in pancreas, liver, kidney, brain, testis, ovary, placenta, malignant lymphoma and neuroblastoma.

Validation Data



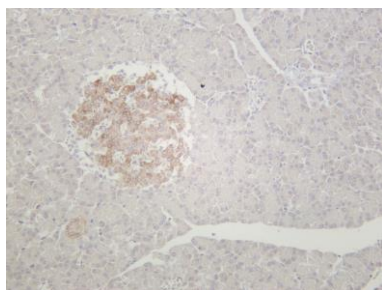
Various whole cell lysates were separated by 4-20% SDS-PAGE, and the membrane was blotted with anti-CD38 antibody. The HRP-conjugated Goat anti-Rabbit IgG(H + L) antibody was used to detect the antibody.

Lane 1: Mouse spleen

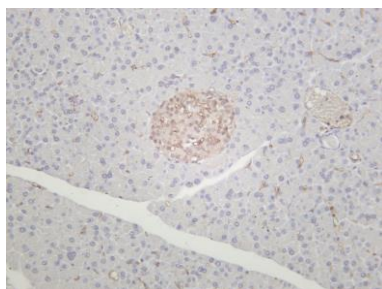
Lane 2: Rat spleen

Predicted band size: 34kDa

Observed band size: 45kDa



Rat pancreas was stained with anti-CD38 rabbit antibody



Mouse pancreas was stained with anti-CD38 rabbit antibody

For Research Use Only