

BMP2 Rabbit mAb (AR1189)

Key Features

Host Species:	Rabbit
Reactivity:	Human,Mouse,Rat
Applications:	WB,IHC,IF,IP,ELISA
Isotype:	IgG,Kappa
MW:	45kD (Calculated) 30,13kD (Observed)

Recommended Dilution Ratios

IHC:	1:200-1000
WB:	1:1000-5000
IF:	1:200-1000
ELISA:	1:5000-20000
IP:	1:50-200

Storage

-15°C to -25°C/1 year (Do not lower than -25°C)

Basic Information

Clonality	Monoclonal
-----------	------------

Immunogen Information

Specificity	Endogenous
-------------	------------

Target Information

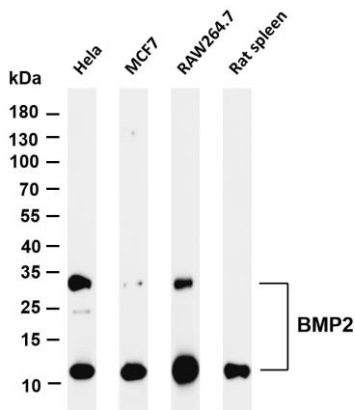
Gene name	BMP2
Protein Name	Bone morphogenetic protein 2

Organism	Gene ID	UniProt ID
Human	650	P12643
Mouse	12156	P21274
Rat	29373	P49001

Cellular Localization	Secreted
Tissue specificity	Particularly abundant in lung, spleen and colon and in low but significant levels in heart, brain, placenta, liver, skeletal muscle,

kidney, pancreas, prostate, ovary and small intestine.

Validation Data



Various whole cell lysates were separated by 4-20% SDS-PAGE, and the membrane was blotted with anti-BMP2 antibody. The HRP-conjugated Goat anti-Rabbit IgG(H + L) antibody was used to detect the antibody.

Lane 1: HeLa

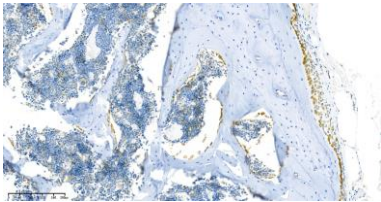
Lane 2: MCF7

Lane 3: RAW264.7

Lane 4: Rat spleen

Predicted band size: 45kDa

Observed band size: 30,13kDa



Rat spine was stained with anti-BMP2 (PT0362R) Rabbit antibody

For Research Use Only