

Ferritin Heavy Chain Rabbit mAb (AR1190)

Key Features

Host Species:	Rabbit
Reactivity:	Mouse,Rat
Applications:	WB,IHC,IF,IP,ELISA
Isotype:	IgG,Kappa
MW:	21kD (Calculated) 21kD (Observed)

Recommended Dilution Ratios

IHC:	1:200-1000
WB:	1:2000-10000
IF:	1:200-1000
ELISA:	1:5000-20000
IP:	1:50-200

Storage

-15°C to -25°C/1 year (Do not lower than -25°C)

Basic Information

Clonality	Monoclonal
-----------	------------

Immunogen Information

Specificity	Endogenous
-------------	------------

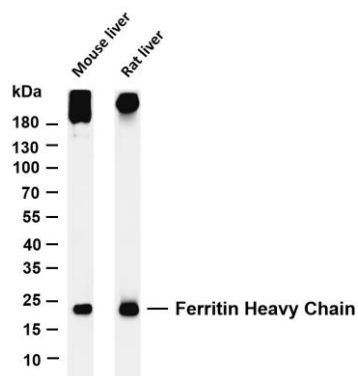
Target Information

Gene name	FTH1
Protein Name	Ferritin heavy chain

Organism	Gene ID	UniProt ID
Human	2495	P02794
Mouse	14319	P09528
Rat	25319	P19132

Cellular Localization	Cytoplasm
Tissue specificity	Expressed in the liver.

Validation Data



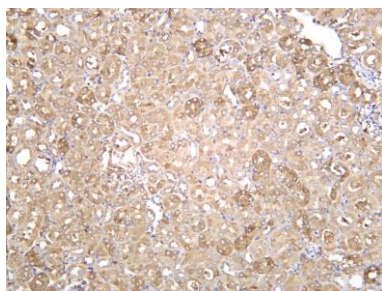
Various whole cell lysates were separated by 4-20% SDS-PAGE, and the membrane was blotted with anti-Ferritin Heavy Chain antibody. The HRP-conjugated Goat anti-Rabbit IgG(H + L) antibody was used to detect the antibody.

Lane 1: Mouse liver

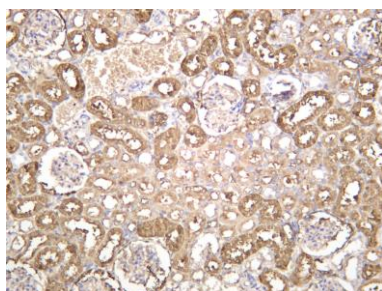
Lane 2: Rat liver

Predicted band size: 21kDa

Observed band size: 21kDa



Mouse kidney was stained with anti-Ferritin Heavy Chain rabbit antibody



Rat kidney was stained with anti-Ferritin Heavy Chain rabbit antibody

For Research Use Only