

## HP1 $\alpha$ Rabbit mAb (AR1192)

### Key Features

Host Species:	Rabbit
Reactivity:	Human, Mouse, Rat
Applications:	WB, IHC, IF, IP, ELISA
Isotype:	IgG, Kappa
MW:	22kD (Calculated) 22kD (Observed)

### Recommended Dilution Ratios

IHC:	1:400-2000
WB:	1:1000-5000
IF:	1:200-1000
ELISA:	1:5000-20000
IP:	1:50-200

### Storage

-15°C to -25°C/1 year (Do not lower than -25°C)

### Basic Information

Clonality	Monoclonal
-----------	------------

### Immunogen Information

Specificity	Endogenous
-------------	------------

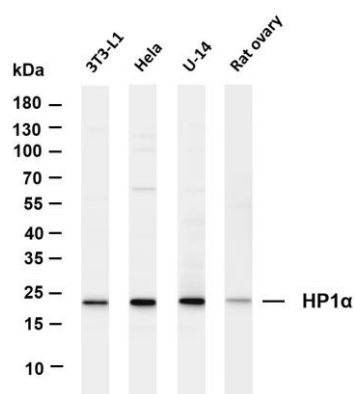
### Target Information

Gene name	CBX5 HP1A
Protein Name	Chromobox protein homolog 5 (Antigen p25) (Heterochromatin protein 1 homolog alpha) (HP1 alpha)

Organism	Gene ID	UniProt ID
Human	23468	P45973
Mouse		Q61686

Cellular Localization	Nucleus
Tissue specificity	Epithelium, Fetal brain cortex, Placenta

## Validation Data



Various whole cell lysates were separated by 4-20% SDS-PAGE, and the membrane was blotted with anti-HP1 $\alpha$  antibody. The HRP-conjugated Goat anti-Rabbit IgG(H + L) antibody was used to detect the antibody.

Lane 1: 3T3-L1

Lane 2: HeLa

Lane 3: U-14

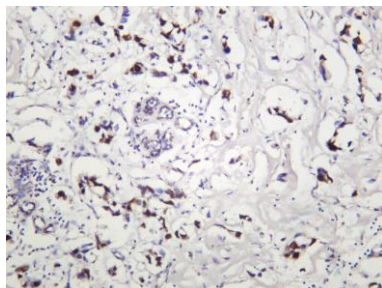
Lane 4: Rat ovary

Predicted band size: 22kDa

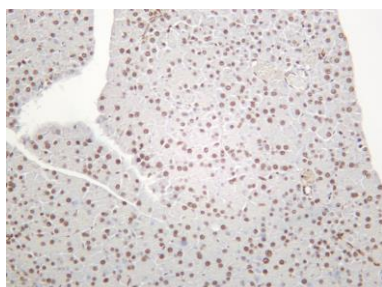
Observed band size: 22kDa



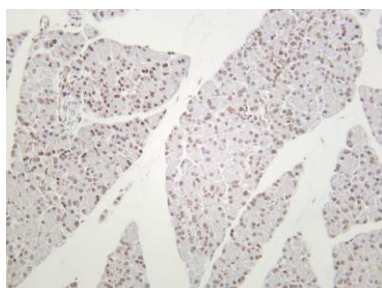
Mouse brain was stained with anti-HP1 $\alpha$  Rabbit antibody



Human breast carcinoma was stained with anti-HP1 $\alpha$  rabbit antibody



Mouse pancreas was stained with anti-HP1 $\alpha$  rabbit antibody



Rat pancreas was stained with anti-HP1 $\alpha$  rabbit antibody