

## GSK3 $\alpha$ Rabbit mAb (AR1193)

### Key Features

Host Species:	Rabbit
Reactivity:	Human, Mouse, Rat
Applications:	WB, IHC, IF, IP, ELISA
Isotype:	IgG, Kappa
MW:	51kD (Calculated) 51kD (Observed)

### Recommended Dilution Ratios

IHC:	1:200-1000
WB:	1:1000-5000
IF:	1:200-1000
ELISA:	1:5000-20000
IP:	1:50-200

### Storage

-15°C to -25°C/1 year (Do not lower than -25°C)

### Basic Information

Clonality	Monoclonal
-----------	------------

### Immunogen Information

Specificity	Endogenous
-------------	------------

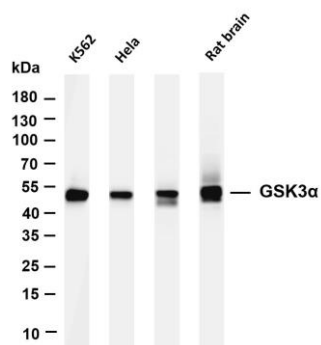
### Target Information

Gene name	GSK3A
Protein Name	Glycogen synthase kinase-3 alpha

Organism	Gene ID	UniProt ID
Human	2931	P49840
Mouse	606496	Q2NL51
Rat	50686	P18265

Cellular Localization	Cytoplasm
Tissue specificity	Brain, Eye, Foreskin, Lung, Pancreas, Platelet, Testis

## Validation Data



Various whole cell lysates were separated by 4-20% SDS-PAGE, and the membrane was blotted with anti-GSK3 $\alpha$  antibody. The HRP-conjugated Goat anti-Rabbit IgG(H + L) antibody was used to detect the antibody.

Lane 1: K562

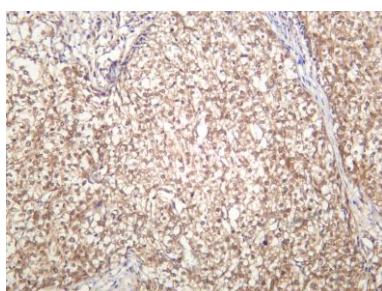
Lane 2: HeLa

Lane 3: Mouse brain

Lane 4: Rat brain

Predicted band size: 51kDa

Observed band size: 51kDa



Human breast carcinoma was stained with anti-GSK3  $\alpha$  rabbit antibody

For Research Use Only