

Arginase-1 Rabbit mAb (AR1191)

Key Features

Host Species:	Rabbit
Reactivity:	Human,Mouse,Rat
Applications:	WB,IHC,IF,IP,ELISA
Isotype:	IgG,Kappa
MW:	35kD (Calculated) 35kD (Observed)

Recommended Dilution Ratios

IHC:	1:200-1000
WB:	1:2000-10000
IF:	1:200-1000
ELISA:	1:5000-20000
IP:	1:50-200

Storage

-15°C to -25°C/1 year (Do not lower than -25°C)

Basic Information

Clonality	Monoclonal
-----------	------------

Immunogen Information

Specificity	Endogenous
-------------	------------

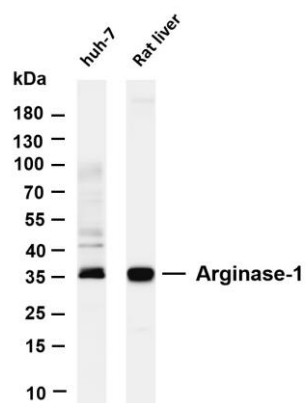
Target Information

Gene name	ARG1
Protein Name	Arginase-1 (EC 3.5.3.1) (Liver-type arginase) (Type I arginase)

Organism	Gene ID	UniProt ID
Human	383	P05089

Cellular Localization	Cytoplasm
Tissue specificity	Within the immune system initially reported to be selectively expressed in granulocytes (polymorphonuclear leukocytes [PMNs]) (PubMed:15546957). Also detected in macrophages mycobacterial granulomas (PubMed:23749634). Expressed in group2 innate lymphoid cells (ILC2s) during lung disease (PubMed:27043409).

Validation Data



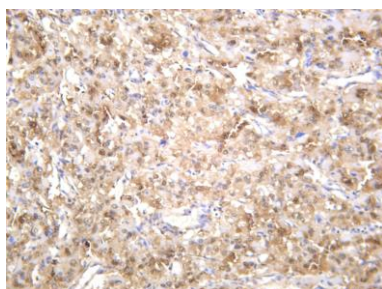
Various whole cell lysates were separated by 4-20% SDS-PAGE, and the membrane was blotted with anti-Arginase-1 antibody. The HRP-conjugated Goat anti-Rabbit IgG(H + L) antibody was used to detect the antibody.

Lane1: huh-7

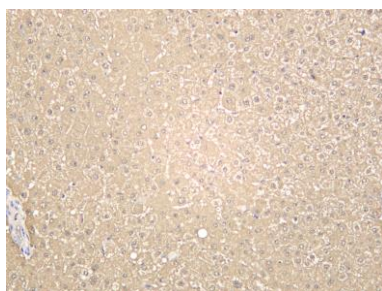
Lane 2: Rat liver

Predicted band size: 35kDa

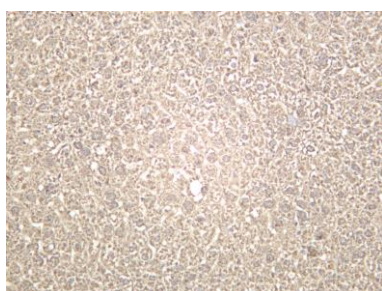
Observed band size: 35kDa



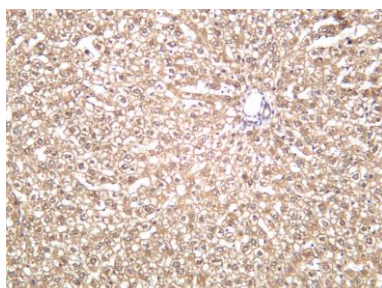
Human hepatocellular carcinoma was stained with anti-Arginase-1 rabbit antibody



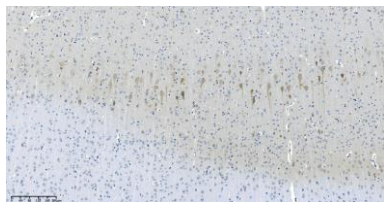
Human liver was stained with anti-Arginase-1 rabbit antibody



Mouse liver was stained with anti-Arginase-1 rabbit antibody



Rat liver was stained with anti-Arginase-1 rabbit antibody



Rat brain was stained with anti-Arginase-1 Rabbit antibody

For Research Use Only