

IRF3 Rabbit mAb (AR1195)

Key Features

Host Species:	Rabbit
Reactivity:	Human, Mouse, Rat
Applications:	WB, IHC, IF, IP, ELISA
Isotype:	IgG, Kappa
MW:	47kD (Calculated) 55kD (Observed)

Recommended Dilution Ratios

IHC:	1:200-1000
WB:	1:500-2000
IF:	1:200-1000
ELISA:	1:5000-20000
IP:	1:50-200

Storage

-15°C to -25°C/1 year (Do not lower than -25°C)

Basic Information

Clonality	Monoclonal
-----------	------------

Immunogen Information

Specificity	Endogenous
-------------	------------

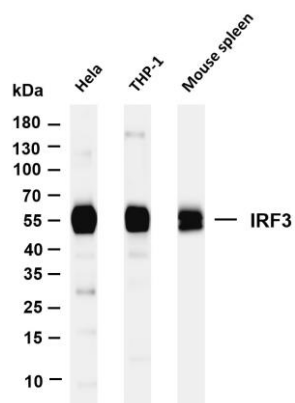
Target Information

Gene name	IRF3
Protein Name	IRF3

Organism	Gene ID	UniProt ID
Human	3661	Q14653
Mouse	54131	P70671

Cellular Localization	Cytoplasm, Nucleus
Tissue specificity	Expressed constitutively in a variety of tissues.

Validation Data



Various whole cell lysates were separated by 4-20% SDS-PAGE, and the membrane was blotted with anti-IRF3 antibody. The HRP-conjugated Goat anti-Rabbit IgG(H + L) antibody was used to detect the antibody.

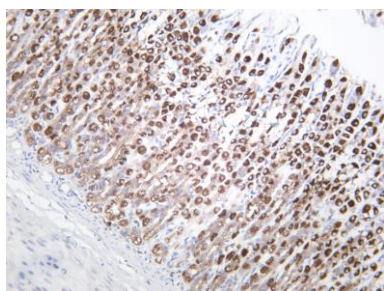
Lane 1: HeLa

Lane 2: THP-1

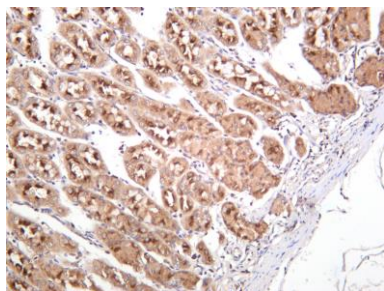
Lane 3: Mouse spleen

Predicted band size: 47kDa

Observed band size: 55kDa



Rat stomach was stained with anti-IRF3 rabbit antibody



Human stomach was stained with anti-IRF3 rabbit antibody

For Research Use Only