

# HLA-DR Rabbit mAb (AR1196)

## Key Features

|               |                                      |
|---------------|--------------------------------------|
| Host Species: | Rabbit                               |
| Reactivity:   | Human, Rat                           |
| Applications: | WB,IHC,IF,IP,ELISA                   |
| Isotype:      | IgG,Kappa                            |
| MW:           | 29kD (Calculated)<br>37kD (Observed) |

## Recommended Dilution Ratios

|        |              |
|--------|--------------|
| IHC:   | 1:1000-4000  |
| WB:    | 1:1000-5000  |
| IF:    | 1:200-1000   |
| ELISA: | 1:5000-20000 |
| IP:    | 1:50-200     |

## Storage

-15°C to -25°C/1 year (Do not lower than -25°C)

## Basic Information

|           |            |
|-----------|------------|
| Clonality | Monoclonal |
|-----------|------------|

## Immunogen Information

|             |            |
|-------------|------------|
| Specificity | Endogenous |
|-------------|------------|

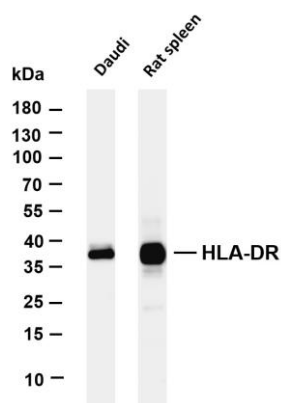
## Target Information

|              |  |
|--------------|--|
| Gene name    | HLA-DRA HLA-DRA1   |
| Protein Name | HLA class II histocompatibility antigen, DR alpha chain (MHC class II antigen DRA) |

| Organism | Gene ID | UniProt ID |
|----------|---------|------------|
| Human    | 3122    | P01903     |

|                       |   |
|-----------------------|---|
| Cellular Localization | Membrane  |
| Tissue specificity    | Expressed in professional APCs: macrophages, dendritic cells and B cells (at protein level) (PubMed:31495665, PubMed:15322540, PubMed:23783831). Expressed in thymic epithelial cells (at protein level) (PubMed:23783831). |

## Validation Data



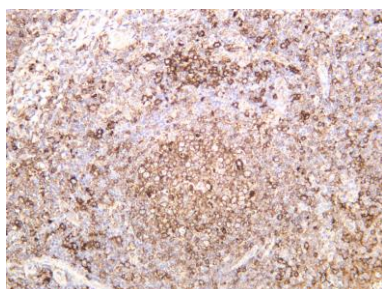
Various whole cell lysates were separated by 4-20% SDS-PAGE, and the membrane was blotted with anti-HLA-DR antibody. The HRP-conjugated Goat anti-Rabbit IgG(H + L) antibody was used to detect the antibody.

Lane 1: Daudi

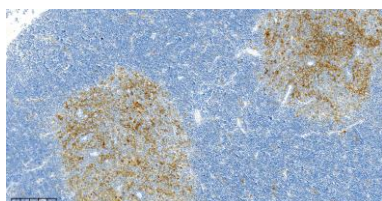
Lane 2: Rat spleen

Predicted band size: 29kDa

Observed band size: 37kDa



Human tonsil was stained with anti-HLA-DR rabbit antibody



Rat thymus was stained with anti-HLA-DR Rabbit antibody

For Research Use Only