

## Caldesmon Rabbit mAb (AR1197)

### Key Features

Host Species:	Rabbit
Reactivity:	Human, Mouse, Rat
Applications:	WB,IHC,IF,IP,ELISA
Isotype:	IgG,Kappa
MW:	93kD (Calculated) 70kD (Observed)

### Recommended Dilution Ratios

IHC:	1:200-1000
WB:	1:2000-10000
IF:	1:200-1000
ELISA:	1:5000-20000
IP:	1:50-200

### Storage

-15°C to -25°C/1 year (Do not lower than -25°C)

### Basic Information

Clonality	Monoclonal
-----------	------------

### Immunogen Information

Specificity	Endogenous
-------------	------------

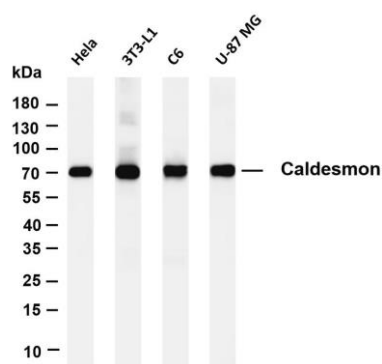
### Target Information

Gene name	CALD1
Protein Name	Caldesmon

Organism	Gene ID	UniProt ID
Human	800	Q05682
Rat	25687	Q62736

Cellular Localization	Cytoplasm
Tissue specificity	High-molecular-weight caldesmon (isoform 1) is predominantly expressed in smooth muscles, whereas low-molecular-weight caldesmon (isoforms 2, 3, 4 and 5) are widely distributed in non-muscle tissues and cells. Not expressed in skeletal muscle or heart.

## Validation Data



Various whole cell lysates were separated by 4-20% SDS-PAGE, and the membrane was blotted with anti-Caldesmon antibody. The HRP-conjugated Goat anti-Rabbit IgG(H + L) antibody was used to detect the antibody.

Lane1: Hela

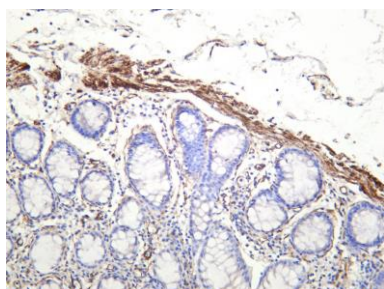
Lane 2: 3T3-L1

Lane 3: C6

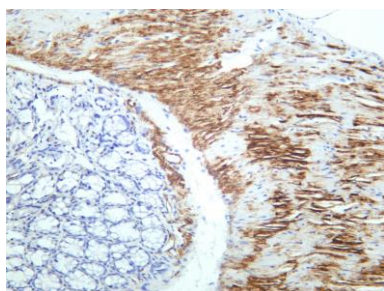
Lane 4: U-87 MG

Predicted band size: 93kDa

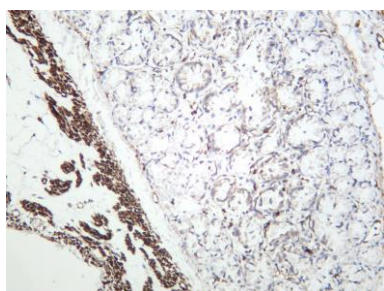
Observed band size: 70kDa



Human colon was stained with anti-Caldesmon rabbit antibody



Mouse colon was stained with anti-Caldesmon rabbit antibody



Rat colon was stained with anti-Caldesmon rabbit antibody

For Research Use Only