

RPA32/RPA2 Rabbit mAb (AR1198)

Key Features

Host Species:	Rabbit
Reactivity:	Human, Mouse, Rat
Applications:	WB, IHC, IF, IP, ELISA
Isotype:	IgG, Kappa
MW:	29kD (Calculated) 29kD (Observed)

Recommended Dilution Ratios

IHC:	1:1000-4000
WB:	1:1000-5000
IF:	1:200-1000
ELISA:	1:5000-20000
IP:	1:50-200

Storage

-15°C to -25°C/1 year (Do not lower than -25°C)

Basic Information

Clonality	Monoclonal
-----------	------------

Immunogen Information

Specificity	Endogenous
-------------	------------

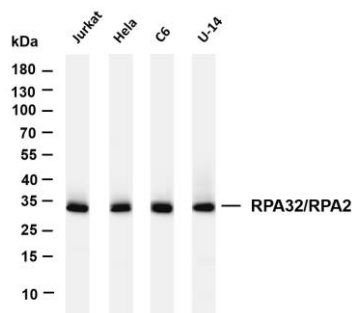
Target Information

Gene name	RPA2
Protein Name	Replication protein A 32kDa subunit

Organism	Gene ID	UniProt ID
Human	6118	P15927
Mouse		Q62193
Rat	59102	Q63528

Cellular Localization	Nucleus
Tissue specificity	Kidney, Lung, Muscle,

Validation Data



Various whole cell lysates were separated by 4-20% SDS-PAGE, and the membrane was blotted with anti-RPA32/RPA2 antibody. The HRP-conjugated Goat anti-Rabbit IgG(H + L) antibody was used to detect the antibody.

Lane 1: Jurkat

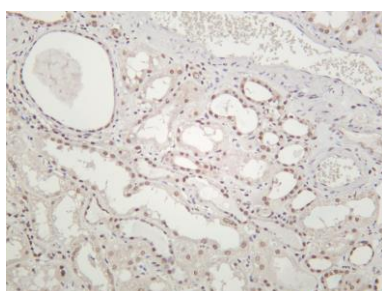
Lane 2: HeLa

Lane 3: C6

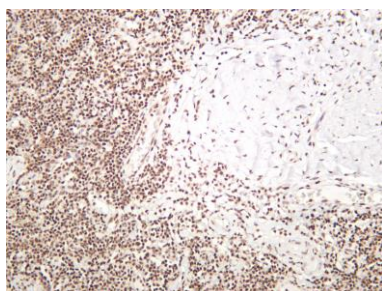
Lane 4: U-14

Predicted band size: 29kDa

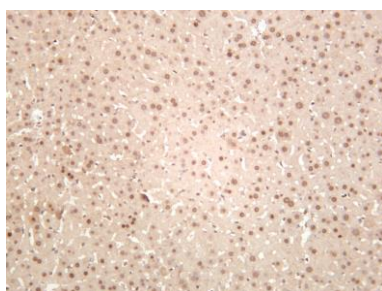
Observed band size: 29kDa



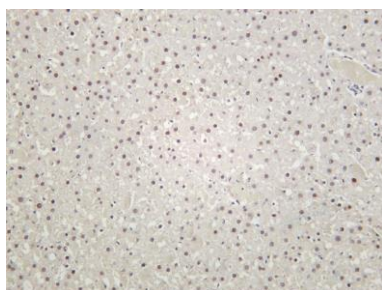
Human kidney was stained with anti-RPA32/RPA2 rabbit antibody



Human tonsil was stained with anti-RPA32/RPA2 rabbit antibody



Mouse liver was stained with anti-RPA32/RPA2 rabbit antibody



Rat liver was stained with anti-RPA32/RPA2 rabbit antibody