

Chk2 Rabbit mAb (AR1199)

Key Features

Host Species:	Rabbit
Reactivity:	Human, Mouse
Applications:	WB, IHC, IF, IP, ELISA
Isotype:	IgG, Kappa
MW:	61kD (Calculated) 61kD (Observed)

Recommended Dilution Ratios

IHC:	1:1000-4000
WB:	1:2000-10000
IF:	1:200-1000
ELISA:	1:5000-20000
IP:	1:50-200

Storage

-15°C to -25°C/1 year (Do not lower than -25°C)

Basic Information

Clonality	Monoclonal
-----------	------------

Immunogen Information

Specificity	Endogenous
-------------	------------

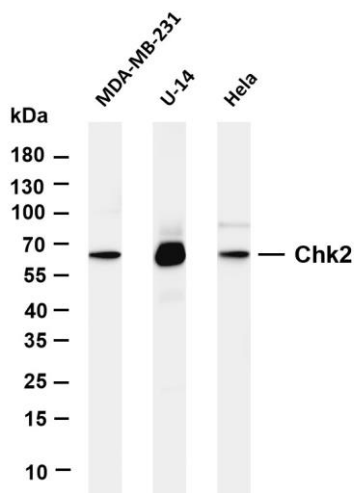
Target Information

Gene name	CHEK2
Protein Name	Serine/threonine-protein kinase Chk2

Organism	Gene ID	UniProt ID
Human	11200	O96017
Mouse	50883	Q9Z265

Cellular Localization	Nucleus
Tissue specificity	High expression is found in testis, spleen, colon and peripheral blood leukocytes. Low expression is found in other tissues.

Validation Data



Various whole cell lysates were separated by 4-20% SDS-PAGE, and the membrane was blotted with anti-Chk2 antibody. The HRP-conjugated Goat anti-Rabbit IgG(H + L) antibody was used to detect the antibody.

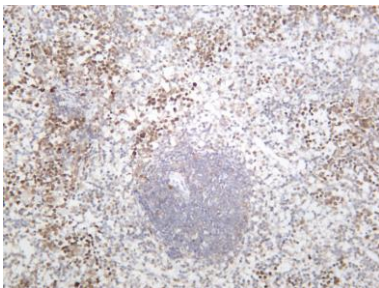
Lane 1: MDA-MB-231

Lane 2: U-14

Lane 3: HeLa

Predicted band size: 61kDa

Observed band size: 61kDa



Mouse spleen was stained with anti-Chk2 rabbit antibody

For Research Use Only