

Cyclin A2 Rabbit mAb (AR1200)

Key Features

Host Species:	Rabbit
Reactivity:	Human, Mouse, Rat
Applications:	WB, IHC, IF, IP, ELISA
Isotype:	IgG, Kappa
MW:	49kD (Calculated) 49kD (Observed)

Recommended Dilution Ratios

IHC:	1:1000-2000
WB:	1:1000-5000
IF:	1:200-1000
ELISA:	1:5000-20000
IP:	1:50-200

Storage

-15°C to -25°C/1 year (Do not lower than -25°C)

Basic Information

Clonality	Monoclonal
-----------	------------

Immunogen Information

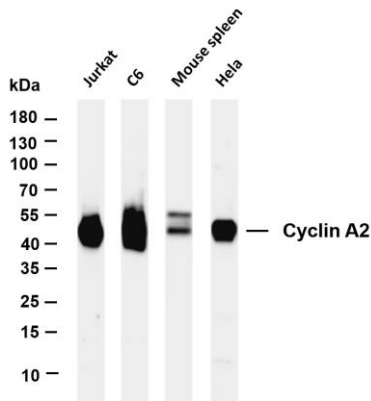
Specificity	Endogenous
-------------	------------

Target Information

Gene name	CCNA2 CCN1 CCNA
Protein Name	Cyclin-A2 (Cyclin-A)

	Organism	Gene ID	UniProt ID
	Human	890	P20248
	Mouse	12428	P51943
Cellular Localization	Cytoplasm, Nucleus		

Validation Data



Various whole cell lysates were separated by 4-20% SDS-PAGE, and the membrane was blotted with anti-Cyclin A2 antibody. The HRP-conjugated Goat anti-Rabbit IgG(H + L) antibody was used to detect the antibody.

Lane 1: Jurkat

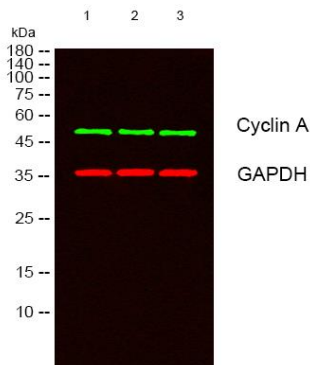
Lane 2: C6

Lane 3: Mouse spleen

Lane 4: HeLa

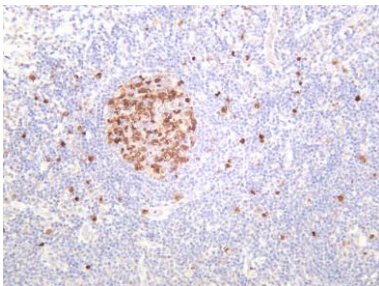
Predicted band size: 49kDa

Observed band size: 49kDa

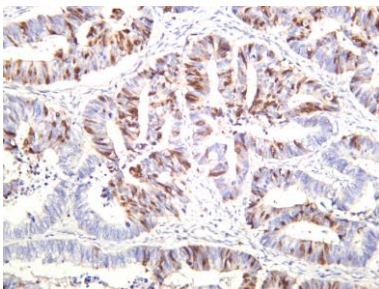


Western blot analysis of lysates from 1) 3T3, 2) Jurkat, 3) K562 cells, (Green)primary antibody was diluted at 1:1000, 4 ° overnight, secondary antibody was diluted at 1:10000, 37°1hour.

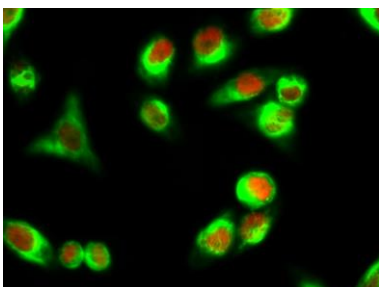
(Red) GAPDH Monoclonal Antibody(2B8) antibody was diluted at 1:5000 as loading control, 4° overnight, secondary Antibody was diluted at 1:10000, 37° 1hour.



Human tonsil was stained with anti-Cyclin A2 rabbit antibody



Human colon carcinoma was stained with anti-Cyclin A2 rabbit antibody



Immunofluorescence analysis of HeLa cell.

1. Cyclin Antibody(red) was diluted at 1:200(4° overnight). β -actin Monoclonal Antibody(5B7) (green) was diluted at 1:200(4 ° overnight).
2. Goat Anti Rabbit Alexa Fluor 594 was diluted at 1:1000(room temperature, 50min). Goat Anti Mouse Alexa Fluor 488 was diluted at 1:1000(room temperature, 50min).

For Research Use Only