

HRAS Rabbit mAb (AR1340)

Key Features

Host Species:	Rabbit
Reactivity:	Human, Mouse, Rat
Applications:	WB, IHC, IF, IP, ELISA
Isotype:	IgG, Kappa
MW:	21kD (Calculated) 21kD (Observed)

Recommended Dilution Ratios

IHC	1:200-1000
WB:	1:2000-10000
IF:	1:200-1000
ELISA:	1:5000-20000
IP:	1:50-200

Storage

-15°C to -25°C/1 year (Do not lower than -25°C)

Basic Information

Clonality	Monoclonal
-----------	------------

Immunogen Information

Specificity	Endogenous
-------------	------------

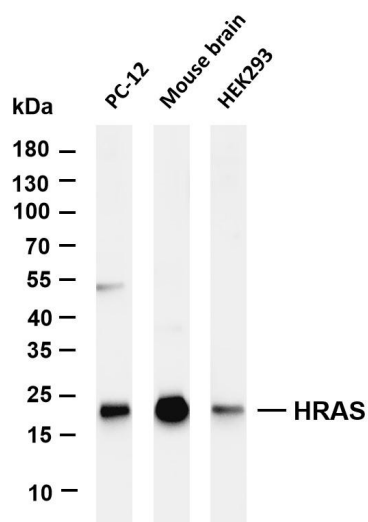
Target Information

Gene name	HRAS, HRAS1
Protein Name	GTPase, H-Ras-1, Ha-Ras, Transforming protein p21, c-H-ras, p21ras, Cleaved into: GTPase HRas N-terminally processed, Cleaved into: GTPase Hras, GTPase Hras, HRAS 1,

Organism	Gene ID	UniProt ID
Human	3265	P01112

Cellular Localization	Cytoplasm, Membrane
Tissue specificity	Widely expressed. {ECO:0000269 PubMed:14500341}.

Validation Data



Various whole cell lysates were separated by 4-20% SDS-PAGE, and the membrane was blotted with anti-HRAS antibody. The HRP-conjugated Goat anti-Rabbit IgG(H + L) antibody was used to detect the antibody.

Lane 1: PC-12

Lane 2: Mouse brain

Lane 3: HEK293

Predicted band size: 21kDa

Observed band size: 21kDa

For Research Use Only