

## IRE1 $\alpha$ Rabbit mAb (AR1342)

### Key Features

Host Species:	Rabbit
Reactivity:	Human, Mouse, Rat
Applications:	WB, IHC, IF, IP, ELISA
Isotype:	IgG, Kappa
MW:	110kD (Calculated) 110kD (Observed)

### Recommended Dilution Ratios

IHC	1:100-500
WB:	1:2000-10000
IF:	1:200-1000
ELISA:	1:5000-20000
IP:	1:50-200

### Storage

-15°C to -25°C/1 year (Do not lower than -25°C)

### Basic Information

Clonality	Monoclonal
-----------	------------

### Immunogen Information

Specificity	Endogenous
-------------	------------

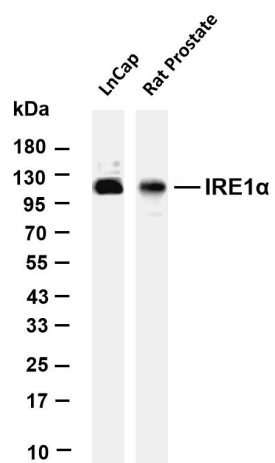
### Target Information

Gene name	ERN1
Protein Name	Serine/threonine-protein kinase/endoribonuclease IRE1

Organism	Gene ID	UniProt ID
Human	2081	O75460
Mouse		Q9EQY0

Cellular Localization	Endoplasmic reticulum membrane
Tissue specificity	Ubiquitously expressed. High levels observed in pancreatic tissue.

## Validation Data



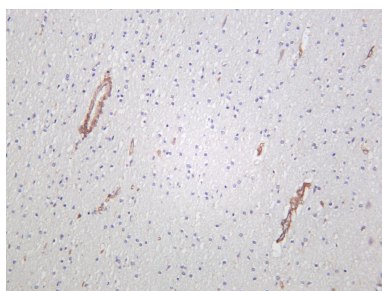
Various whole cell lysates were separated by 4-20% SDS-PAGE, and the membrane was blotted with anti-IRE1  $\alpha$  antibody. The HRP-conjugated Goat anti-Rabbit IgG(H + L) antibody was used to detect the antibody.

Lane 1: LnCap

Lane 2: Rat Prostate

Predicted band size: 110kDa

Observed band size: 110kDa



Human brain was stained with anti-IRE1 $\alpha$  rabbit antibody

For Research Use Only