

Insulin Rabbit mAb (AR1341)

Key Features

| | |
|---------------|--------------------------------------|
| Host Species: | Rabbit |
| Reactivity: | Human,Mouse,Rat |
| Applications: | WB,IHC,IF,IP,ELISA |
| Isotype: | IgG,Kappa |
| MW: | 12kD (Calculated) 12kD (Observed) |

Recommended Dilution Ratios

| | |
|--------|--------------|
| IHC | 1:200-1000 |
| WB: | 1:1000-5000 |
| IF: | 1:200-1000 |
| ELISA: | 1:5000-20000 |
| IP: | 1:50-200 |

Storage

-15°C to -25°C/1 year (Do not lower than -25°C)

Basic Information

| | |
|-----------|------------|
| Clonality | Monoclonal |
|-----------|------------|

Immunogen Information

| | |
|-------------|------------|
| Specificity | Endogenous |
|-------------|------------|

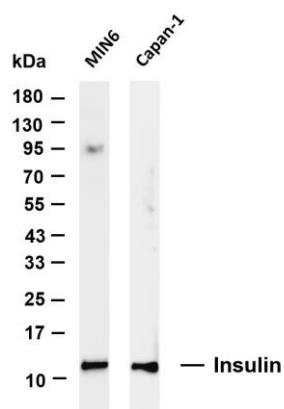
Target Information

| | |
|--------------|---------|
| Gene name | INS |
| Protein Name | Insulin |

| Organism | Gene ID | UniProt ID |
|----------|---------|------------|
| Human | 3630 | P01308 |

| | |
|-----------------------|---------------------------------|
| Cellular Localization | Cytoplasmic |
| Tissue specificity | Blood, Liver, Muscle, Pancreas, |

Validation Data



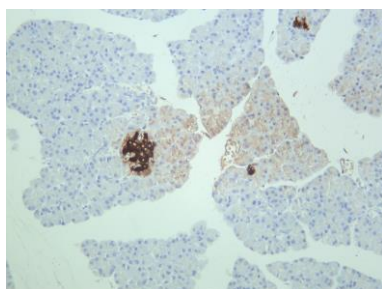
Various whole cell lysates were separated by 4-20% SDS-PAGE, and the membrane was blotted with anti-Insulin antibody. The HRP-conjugated Goat anti-Rabbit IgG(H + L) antibody was used to detect the antibody.

Lane 1: MIN6

Lane 2: Capan-1

Predicted band size: 12kDa

Observed band size: 12kDa



Rat pancreas was stained with anti-Insulin rabbit antibody

For Research Use Only