

Lamin A/C Rabbit mAb (AR1344)

Key Features

Host Species:	Rabbit
Reactivity:	Human,Mouse,Rat
Applications:	WB,IHC,IF,IP,ELISA
Isotype:	IgG,Kappa
MW:	74kD (Calculated) 74kD,63 kD (Observed)

Recommended Dilution Ratios

IHC	1:1000-4000
WB:	1:2000-10000
IF:	1:200-1000
ELISA:	1:5000-20000
IP:	1:50-200

Storage

-15°C to -25°C/1 year (Do not lower than -25°C)

Basic Information

Clonality	Monoclonal
-----------	------------

Immunogen Information

Specificity	Endogenous
-------------	------------

Target Information

Gene name	LMNA LMN1
Protein Name	Prelamin-A/C [Cleaved into: Lamin-A/C (70 kDa lamin) (Renal carcinoma antigen NYREN-32)]

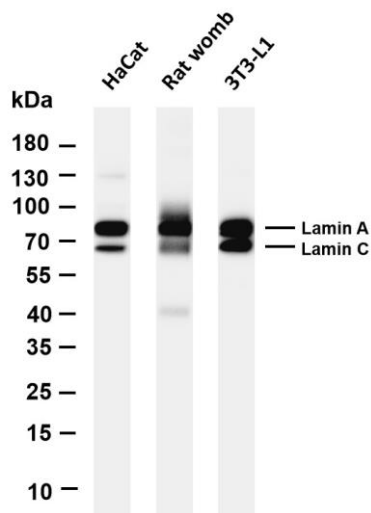
Organism	Gene ID	UniProt ID
Human	4000	P02545
Mouse	16905	P48678

Cellular Localization	Nucleus
-----------------------	---------

Tissue specificity	In the arteries, prelamin-A/C accumulation is not observed in young healthy vessels but is prevalent in medial vascular smooth muscle cells (VSMCs) from aged individuals and in atherosclerotic lesions,
--------------------	---

where it often colocalizes with senescent and degenerate VSMCs. Prelamin-A/C expression increases with age and disease. In normal aging, the accumulation of prelamin-A/C is caused in part by the down-regulation of ZMPSTE24/FACE1 in response to oxidative stress.

Validation Data



Various whole cell lysates were separated by 4-20% SDS-PAGE, and the membrane was blotted with anti-Lamin A /C antibody. The HRP-conjugated Goat anti-Rabbit IgG(H + L) antibody was used to detect the antibody.

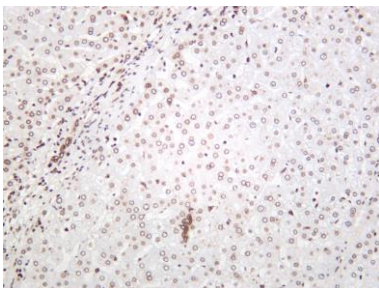
Lane 1: HaCat

Lane 2: Rat womb

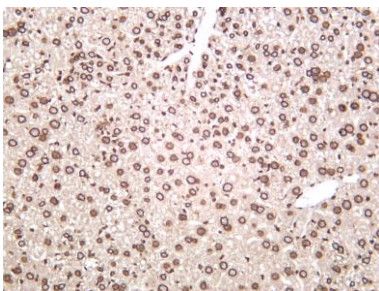
Lane 3: 3T3-L1

Predicted band size: 74kDa

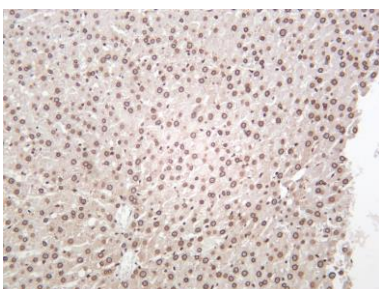
Observed band size: 74,63kDa



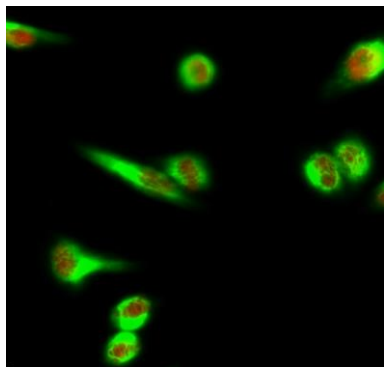
Human liver was stained with anti-Lamin A/C rabbit antibody



Mouse liver was stained with anti-Lamin A/C rabbit antibody



Rat liver was stained with anti-Lamin A/C rabbit antibody



Immunofluorescence analysis of HeLa cell.

1. Lamin A/C Antibody(red) was diluted at 1:200(4° overnight). Galectin-3 Monoclonal Antibody(6G2) (green) was diluted at 1:200(4° overnight).
2. Goat Anti Rabbit Alexa Fluor 594 was diluted at 1:1000(room temperature, 50min). Goat Anti Mouse Alexa Fluor 488 was diluted at 1:1000(room temperature, 50min).

For Research Use Only