

LKB1 Rabbit mAb (AR1345)

Key Features

Host Species:	Rabbit
Reactivity:	Human,Mouse,Rat
Applications:	WB,IF,IP,ELISA
Isotype:	IgG,Kappa
MW:	49kD (Calculated) 60kD (Observed)

Recommended Dilution Ratios

WB:	1:2000-10000
IF:	1:200-1000
ELISA:	1:5000-20000
IP:	1:50-200

Storage

-15°C to -25°C/1 year (Do not lower than -25°C)

Basic Information

Clonality	Monoclonal
-----------	------------

Immunogen Information

Specificity	Endogenous
-------------	------------

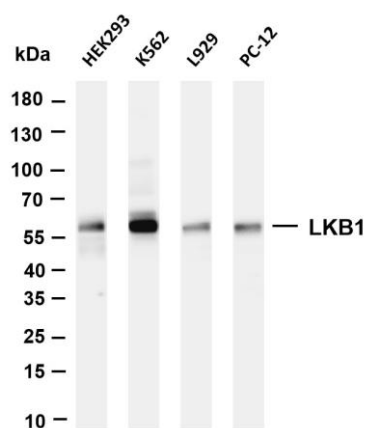
Target Information

Gene name	STK11
Protein Name	Serine/threonine-protein kinase STK11

Organism	Gene ID	UniProt ID
Human	6794	Q15831
Mouse	20869	Q9WTK7

Cellular Localization	Cytoplasm, Nucleus
Tissue specificity	Ubiquitously expressed. Strongest expression in testis and fetal liver.

Validation Data



Various whole cell lysates were separated by 4-20% SDS-PAGE, and the membrane was blotted with anti-LKB1 antibody. The HRP-conjugated Goat anti-Rabbit IgG(H + L) antibody was used to detect the antibody.

Lane 1: HEK293

Lane 2: K562

Lane 3: L929

Lane 4: PC-12

Predicted band size: 49kDa

Observed band size: 60kDa

For Research Use Only