

## cGAS Rabbit mAb (AR1347)

### Key Features

Host Species:	Rabbit
Reactivity:	Mouse
Applications:	WB,IHC,IF,IP,ELISA
Isotype:	IgG,Kappa
MW:	59kD (Calculated) 59kD (Observed)

### Recommended Dilution Ratios

IHC:	1:200-1000
WB:	1:2000-10000
IF:	1:200-1000
ELISA:	1:5000-20000
IP:	1:50-200

### Storage

-15°C to -25°C/1 year (Do not lower than -25°C)

### Basic Information

Clonality	Monoclonal
-----------	------------

### Immunogen Information

Specificity	Endogenous
-------------	------------

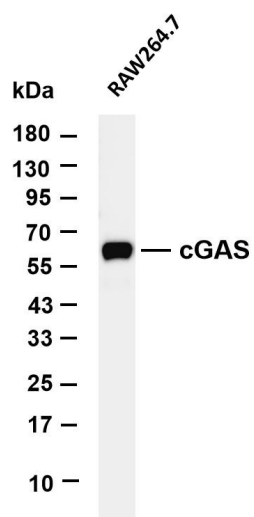
### Target Information

Gene name	MB21D1 cGAS C6orf150
Protein Name	M21D1

Organism	Gene ID	UniProt ID
Human	115004	Q8N884

Cellular Localization	Cytoplasm, Nucleus
Tissue specificity	Expressed in the monocytic cell line THP1.

## Validation Data

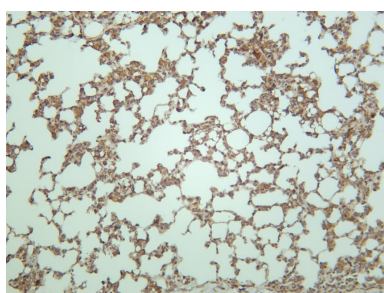


Various whole cell lysates were separated by 4-20% SDS-PAGE, and the membrane was blotted with anti-cGAS antibody. The HRP-conjugated Goat anti-Rabbit IgG(H + L) antibody was used to detect the antibody.

Lane 1: RAW264.7

Predicted band size: 59kDa

Observed band size: 59kDa



Mouse lung was stained with anti-cGAS rabbit antibody

For Research Use Only