

## MYPT1 Rabbit mAb (AR1355)

### Key Features

Host Species:	Rabbit
Reactivity:	Human
Applications:	WB,IHC,IF,IP,ELISA
Isotype:	IgG,Kappa
MW:	115kD (Calculated) 140kD (Observed)

### Recommended Dilution Ratios

IHC:	1:200-1000
WB:	1:2000-10000
IF:	1:200-1000
ELISA:	1:5000-20000
IP:	1:50-200

### Storage

-15°C to -25°C/1 year (Do not lower than -25°C)

### Basic Information

Clonality	Monoclonal
-----------	------------

### Immunogen Information

Specificity	Endogenous
-------------	------------

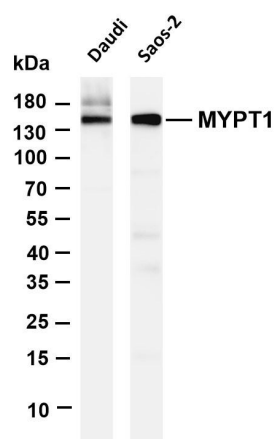
### Target Information

Gene name	PPP1R12A
Protein Name	Protein phosphatase 1 regulatory subunit 12A

Organism	Gene ID	UniProt ID
Human	4659	O14974
Mouse	17931	Q9DBR7
Rat	116670	Q10728

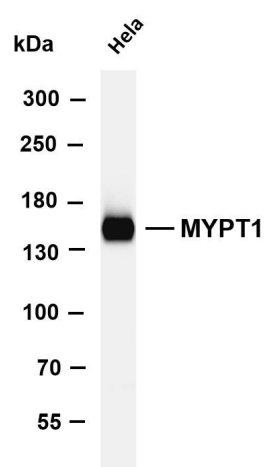
Cellular Localization	Cytoplasm
Tissue specificity	Protein phosphatase 1 regulatory subunit 12A

Validation Data



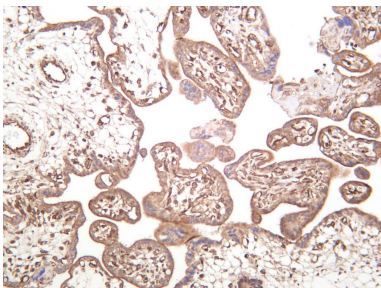
Various whole cell lysates were separated by 4-20% SDS-PAGE, and the membrane was blotted with anti-MYPT1 antibody. The HRP-conjugated Goat anti-Rabbit IgG(H + L) antibody was used to detect the antibody.

Lane 1: Daudi  
Lane 2: Saos-2  
Predicted band size: 115kDa  
Observed band size: 140kDa



Various whole cell lysates were separated by 4-8% SDS-PAGE, and the membrane was blotted with anti-MYPT1 antibody. The HRP-conjugated Goat anti-Rabbit IgG(H + L) antibody was used to detect the antibody.

Lane 1: HeLa  
Predicted band size: 115kDa  
Observed band size: 140kDa



Human placenta was stained with anti-MYPT1 rabbit antibody

For Research Use Only