

eNOS Rabbit mAb (AR1359)

Key Features

Host Species:	Rabbit
Reactivity:	Human, Mouse, Rat
Applications:	WB, IHC, IF, IP, ELISA
Isotype:	IgG, Kappa
MW:	133kD (Calculated) 133kD (Observed)

Recommended Dilution Ratios

IHC:	1:1000-4000
WB:	1:2000-10000
IF:	1:200-1000
ELISA:	1:5000-20000
IP:	1:50-200

Storage

-15°C to -25°C/1 year (Do not lower than -25°C)

Basic Information

Clonality	Monoclonal
-----------	------------

Immunogen Information

Specificity	Endogenous
-------------	------------

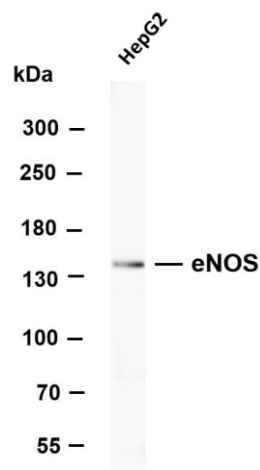
Target Information

Gene name	NOS3
Protein Name	Nitric oxide synthase, endothelial

Organism	Gene ID	UniProt ID
Human	4846	P29474
Mouse	18127	P70313
Rat	24600	Q62600

Cellular Localization	Membrane
Tissue specificity	Platelets, placenta, liver and kidney.

Validation Data

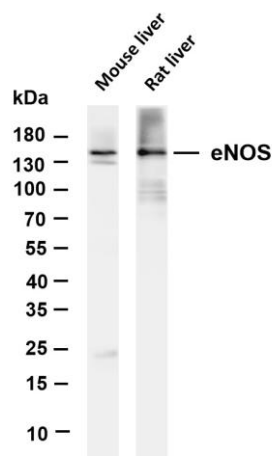


Various whole cell lysates were separated by 4-20% SDS-PAGE, and the membrane was blotted with anti-eNOS antibody. The HRP-conjugated Goat anti-Rabbit IgG(H + L) antibody was used to detect the antibody.

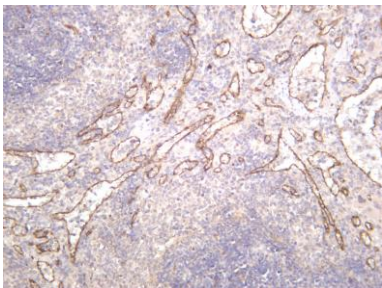
Lane 1: HepG2

Predicted band size: 133kDa

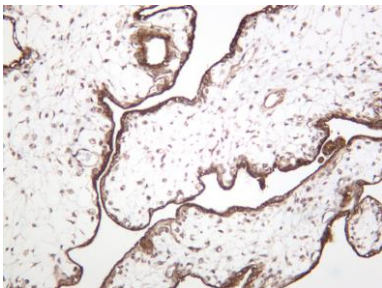
Observed band size: 133kDa



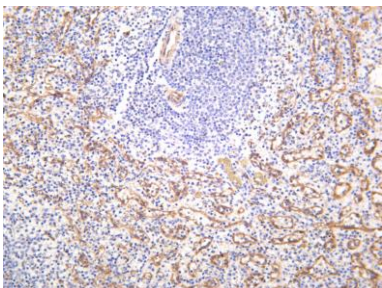
Mouse liver was stained with anti-eNOS rabbit antibody



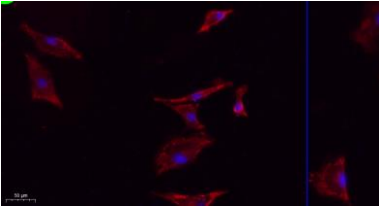
Rat spleen was stained with anti-eNOS rabbit antibody



Human placenta was stained with anti-eNOS rabbit antibody



Human spleen was stained with anti-eNOS rabbit antibody



Immunofluorescence analysis of A549.

1. primary Antibody(red) was diluted at 1:200(4°C overnight).
2. Goat Anti Rabbit IgG (H&L) - Alexa Fluor 594 Secondary antibody was diluted at 1:1000(room temperature, 50min).
3. DAPI (blue) 10min.

For Research Use Only