

NF- κ B1 p105/p50 Rabbit mAb (AR1358)

Key Features

Host Species:	Rabbit
Reactivity:	Human, Mouse, Rat
Applications:	WB, IHC, IF, IP, ELISA
Isotype:	IgG, Kappa
MW:	105kD (Calculated) 50kD, 105kD (Observed)

Recommended Dilution Ratios

IHC:	1:200-1000
WB:	1:2000-10000
IF:	1:200-1000
ELISA:	1:5000-20000
IP:	1:50-200

Storage

-15°C to -25°C/1 year (Do not lower than -25°C)

Basic Information

Clonality	Monoclonal
-----------	------------

Immunogen Information

Specificity	Endogenous
-------------	------------

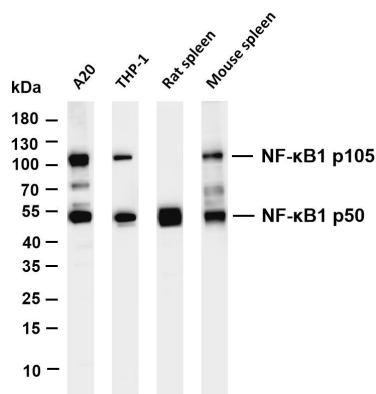
Target Information

Gene name	NFKB1
Protein Name	Nuclear factor NF-kappa-B p105 subunit

Organism	Gene ID	UniProt ID
Human	4790	P19838
Mouse	18033	P25799
Rat		Q63369

Cellular Localization	Cytoplasm, Nucleus
Tissue specificity	Muscle, Rectum tumor, Uterus

Validation Data



Various whole cell lysates were separated by 4-20% SDS-PAGE, and the membrane was blotted with anti-NF-κ B1 p105/p50 antibody. The HRP conjugated Goat anti-Rabbit IgG(H + L) antibody was used to detect the antibody.

Lane 1: A20

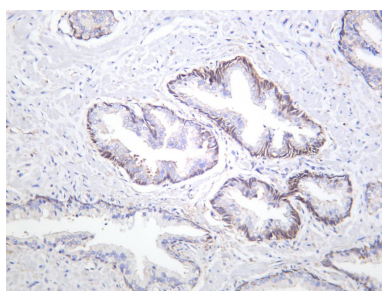
Lane 2: THP-1

Lane 3: Rat spleen

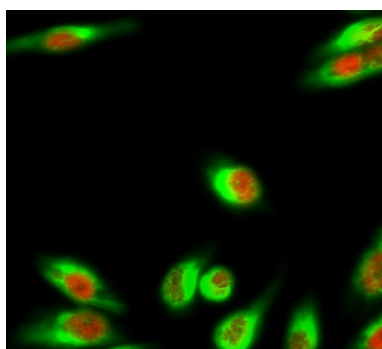
Lane 4: Mouse spleen

Predicted band size: 105kDa

Observed band size: 50,105kDa



Human prostate carcinoma was stained with anti-NF-κ B1 p105/p50 rabbit antibody



Immunofluorescence analysis of HeLa cell.

1. NFκ B-p105/p50 Antibody(red) was diluted at 1:200(4° overnight). GAPDH Monoclonal Antibody(2B8)(green) was diluted at 1:200(4° overnight).
2. Goat Anti Rabbit Alexa Fluor 594 was diluted at 1:1000(room temperature, 50min). Goat Anti Mouse Alexa Fluor 488 was diluted at 1:1000(room temperature, 50min).

For Research Use Only