

Oct-2 Rabbit mAb (AR1361)

Key Features

Host Species:	Rabbit
Reactivity:	Human
Applications:	WB,IHC,IF,IP,ELISA
Isotype:	IgG,Kappa
MW:	51kD (Calculated) 65kD (Observed)

Recommended Dilution Ratios

IHC:	1:400-1000
WB:	1:2000-10000
IF:	1:200-1000
ELISA:	1:5000-20000
IP:	1:50-200

Storage

-15°C to -25°C/1 year (Do not lower than -25°C)

Basic Information

Clonality	Monoclonal
-----------	------------

Immunogen Information

Specificity	Endogenous
-------------	------------

Target Information

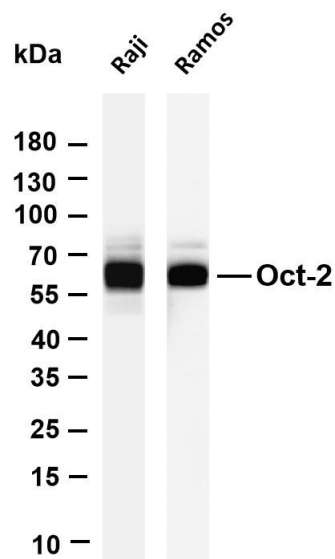
Gene name	POU2F2 OCT2 OTF2
Protein Name	Oct-2

Organism	Gene ID	UniProt ID
Human	5452	P09086

Cellular Localization	Nucleus
-----------------------	---------

Tissue specificity	Isoform 3 is B-cell specific. Isoform 5 is expressed in B-cells and the immunoglobulin expressing T-cell line MOLT-4, but not in the T-cell line BW5147.
--------------------	--

Validation Data



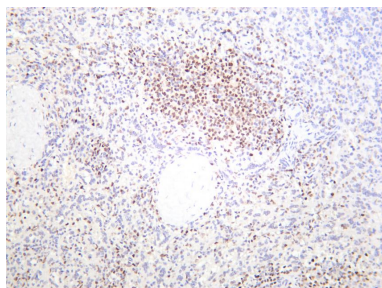
Various whole cell lysates were separated by 4-20% SDS-PAGE, and the membrane was blotted with anti-Oct-2 antibody. The HRP-conjugated Goat anti-Rabbit IgG(H + L) antibody was used to detect the antibody.

Lane 1: Raji

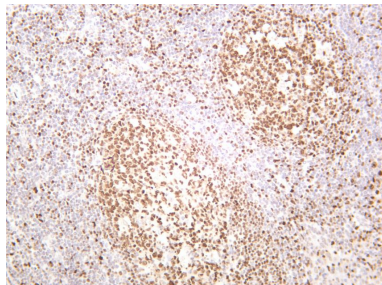
Lane 2: Ramos

Predicted band size: 51kDa

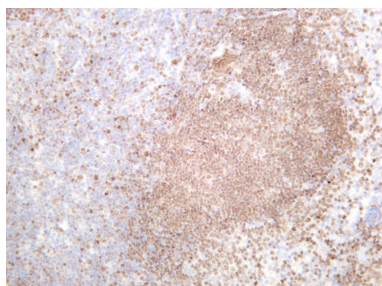
Observed band size: 65kDa



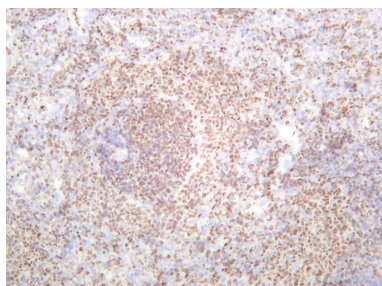
Human spleen was stained with anti-Oct-2 rabbit antibody



Human tonsil was stained with anti-Oct-2 rabbit antibody



Mouse spleen was stained with anti-Oct-2 rabbit antibody



Rat spleen was stained with anti-Oct-2 rabbit antibody

For Research Use Only