

p63 Rabbit mAb (AR1362)

Key Features

Host Species:	Rabbit
Reactivity:	Human, Mouse, Rat,
Applications:	WB, IHC, IF, IP, ELISA
Isotype:	IgG, Kappa
MW:	77kD (Calculated) 77kD (Observed)

Recommended Dilution Ratios

IHC:	1:1000-4000
WB:	1:2000-10000
IF:	1:200-1000
ELISA:	1:5000-20000
IP:	1:50-200

Storage

-15°C to -25°C/1 year (Do not lower than -25°C)

Basic Information

Clonality	Monoclonal
-----------	------------

Immunogen Information

Specificity	Endogenous
-------------	------------

Target Information

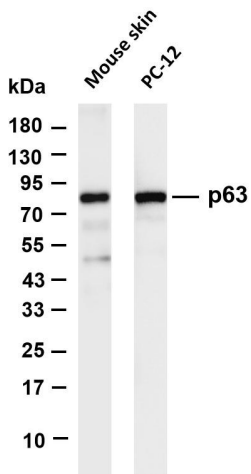
Gene name	TP63 KET P63 P73H P73L TP73L
Protein Name	Tumor protein 63 (p63) (Chronic ulcerative stomatitis protein) (CUSP) (Keratinocyte transcription factor KET) (Transformation-related protein 63) (TP63) (Tumor protein p73- like) (p73L) (p40) (p51)

Organism	Gene ID	UniProt ID
Human	8626	Q9H3D4

Cellular Localization	Nucleus
Tissue specificity	Widely expressed, notably in heart, kidney, placenta, prostate, skeletal muscle, testis and thymus, although the precise isoform

varies according to tissue type. Progenitor cell layers of skin, breast, eye and prostate express high levels of DeltaN-type isoforms. Isoform 10 is predominantly expressed in skin squamous cell carcinomas, but not in normal skin tissues.

Validation Data



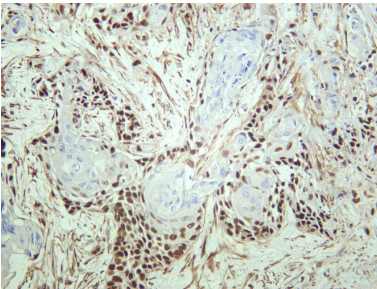
Various whole cell lysates were separated by 4-20% SDS-PAGE, and the membrane was blotted with anti-p63 antibody. The HRP-conjugated Goat anti-Rabbit IgG(H + L) antibody was used to detect the antibody.

Lane 1: Mouse skin

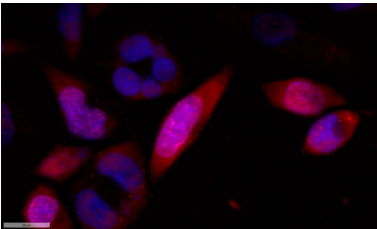
Lane 2: PC-12

Predicted band size: 77kDa

Observed band size: 77kDa



Human bladder carcinoma was stained with anti-p63 rabbit antibody



Immunofluorescence analysis of SiHa cell.

1. primary Antibody was diluted at 1:100(4°C overnight).
2. Goat Anti Rabbit IgG (H&L) - AFuor 594 Secondary antibody was diluted at 1:500(room temperature, 50min).

For Research Use Only