

## PDI Rabbit mAb (AR1363)

### Key Features

Host Species:	Rabbit
Reactivity:	Human, Mouse, Rat,
Applications:	WB, IHC, IF, IP, ELISA
Isotype:	IgG, Kappa
MW:	57kD (Calculated) 57kD (Observed)

### Recommended Dilution Ratios

IHC:	1:200-1000
WB:	1:2000-10000
IF:	1:200-1000
ELISA:	1:5000-20000
IP:	1:50-200

### Storage

-15°C to -25°C/1 year (Do not lower than -25°C)

### Basic Information

Clonality	Monoclonal
-----------	------------

### Immunogen Information

Specificity	Endogenous
-------------	------------

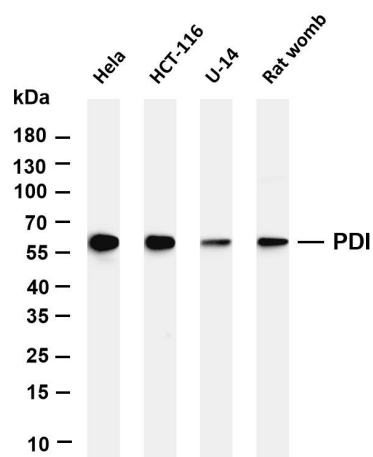
### Target Information

Gene name	P4HB ERBA2L PDI PDIA1 PO4DB
Protein Name	Protein disulfide-isomerase (PDI) (Cellular thyroid hormone-binding protein) (Prolyl 4- hydroxylase subunit beta) (p55)

Organism	Gene ID	UniProt ID
Human	5034	P07237
Mouse	18453	P09103
Rat	25506	P04785

Cellular Localization	Endoplasmic reticulum
-----------------------	-----------------------

## Validation Data



Various whole cell lysates were separated by 4-20% SDS-PAGE, and the membrane was blotted with anti-PDI antibody. The HRP-conjugated Goat anti-Rabbit IgG(H + L) antibody was used to detect the antibody.

Lane 1: HeLa

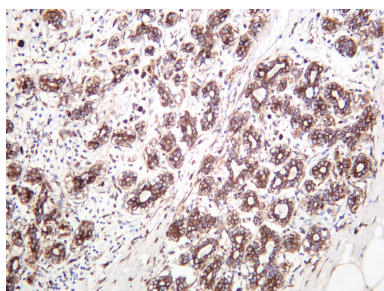
Lane 2: HCT-116

Lane 3: U-14

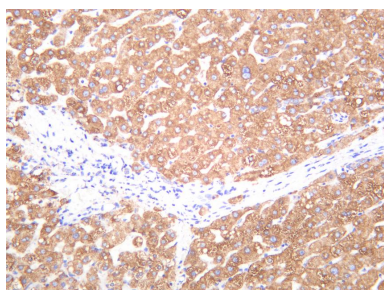
Lane 4: Rat womb

Predicted band size: 57kDa

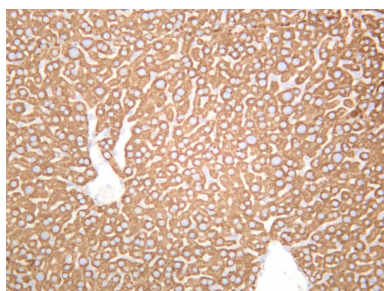
Observed band size: 57kDa



Human breast carcinoma was stained with anti-PDI rabbit antibody



Human liver was stained with anti-PDI rabbit antibody



Rat liver was stained with anti-PDI rabbit antibody

For Research Use Only