

PAX5 Rabbit mAb (AR1365)

Key Features

Host Species:	Rabbit
Reactivity:	Human, Mouse, Rat
Applications:	WB, IHC, IF, IP, ELISA
Isotype:	IgG, Kappa
MW:	42kD (Calculated) 42kD (Observed)

Recommended Dilution Ratios

IHC:	1:1000-4000
WB:	1:2000-10000
IF:	1:200-1000
ELISA:	1:5000-20000
IP:	1:50-200

Storage

-15°C to -25°C/1 year (Do not lower than -25°C)

Basic Information

Clonality	Monoclonal
-----------	------------

Immunogen Information

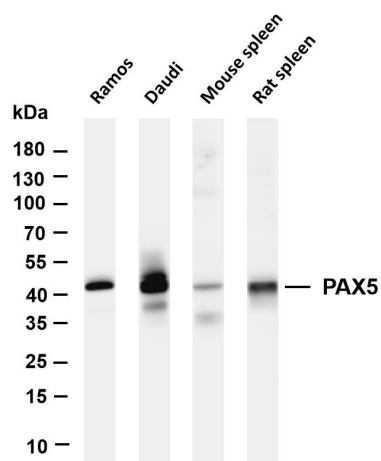
Specificity	Endogenous
-------------	------------

Target Information

Gene name	PAX5
Protein Name	PAX-5

	Organism	Gene ID	UniProt ID
	Human	5079	Q02548
	Mouse	18507	Q02650
Cellular Localization	Nuclear		

Validation Data



Various whole cell lysates were separated by 4-20% SDS-PAGE, and the membrane was blotted with anti-PAX5 antibody. The HRP-conjugated Goat anti-Rabbit IgG(H + L) antibody was used to detect the antibody.

Lane 1: Ramos

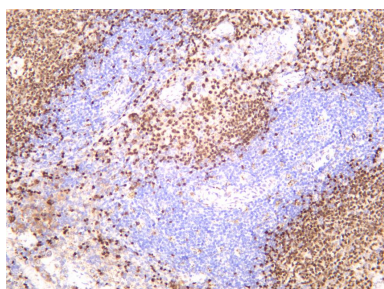
Lane 2: Daudi

Lane 3: Mouse spleen

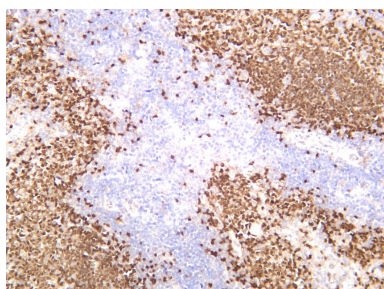
Lane 4: Rat spleen

Predicted band size: 42kDa

Observed band size: 42kDa



Mouse spleen was stained with anti-PAX5 rabbit antibody



Rat spleen was stained with anti-PAX5 rabbit antibody

For Research Use Only