

## PDGFR- $\alpha$ Rabbit mAb (AR1366)

### Key Features

Host Species:	Rabbit
Reactivity:	Human,Mouse,Rat
Applications:	WB,IF,IP,ELISA
Isotype:	IgG,Kappa
MW:	123kD (Calculated) 190kD (Observed)

### Recommended Dilution Ratios

WB:	1:2000-10000
IF:	1:200-1000
ELISA:	1:5000-20000
IP:	1:50-200

### Storage

-15°C to -25°C/1 year (Do not lower than -25°C)

### Basic Information

Clonality	Monoclonal
-----------	------------

### Immunogen Information

Specificity	Endogenous
-------------	------------

### Target Information

Gene name	PDGFRA PDGFR2 RHEPDGFRA Platelet-derived growth factor receptor alpha (PDGF-R-alpha) (PDGFR-alpha) (Alpha plateletderived growth factor receptor) (Alpha-type platelet-derived growth factor receptor) (CD140 antigen-like family member A) (CD140a antigen) (Platelet-derived growth factor alpha receptor) (Platelet-derived growth factor receptor 2) (PDGFR-2) (CD antigen CD140a)
Protein Name	

Organism	Gene ID	UniProt ID
Human	5156	P16234
Mouse	18595	P26618
Rat	25267	P20786

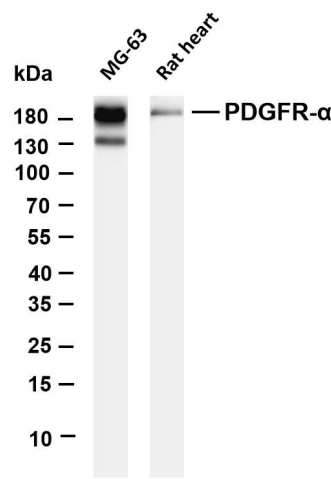
Cellular Localization

Cell membrane; Single-pass type I membrane protein. Cell projection, cilium. Golgi apparatus.

Tissue specificity

Detected in platelets (at protein level). Widely expressed. Detected in brain, fibroblasts, smooth muscle, heart, and embryo. Expressed in primary and metastatic colon tumors and in normal colon tissue.

Validation Data



Various whole cell lysates were separated by 4-20% SDS-PAGE, and the membrane was blotted with anti-PDGFR- $\alpha$  antibody. The HRP-conjugated Goat anti-Rabbit IgG(H + L) antibody was used to detect the antibody.

Lane 1: MG-63

Lane 2: Rat heart

Predicted band size: 123kDa

Observed band size: 190kDa

For Research Use Only