

PDGFR- β Rabbit mAb (AR1367)

Key Features

Host Species:	Rabbit
Reactivity:	Human, Mouse, Rat
Applications:	WB, IHC, IF, IP, ELISA
Isotype:	IgG, Kappa
MW:	124kD (Calculated) 190kD (Observed)

Recommended Dilution Ratios

IHC:	1:200-1000
WB:	1:2000-10000
IF:	1:200-1000
ELISA:	1:5000-20000
IP:	1:50-200

Storage

-15°C to -25°C/1 year (Do not lower than -25°C)

Basic Information

Clonality	Monoclonal
-----------	------------

Immunogen Information

Specificity	Endogenous
-------------	------------

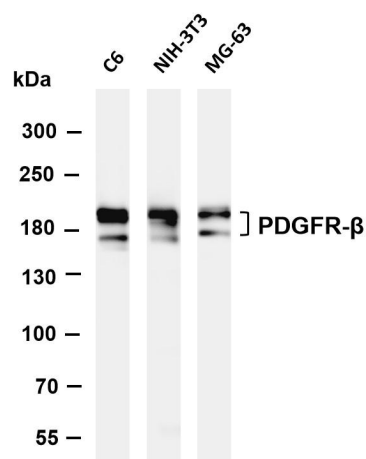
Target Information

Gene name	PDGFRB
Protein Name	Platelet-derived growth factor receptor beta

Organism	Gene ID	UniProt ID
Human	5159	P09619
Mouse	18596	P05622
Rat	24629	Q05030

Cellular Localization	Membrane
Tissue specificity	Brain, Spleen

Validation Data



Various whole cell lysates were separated by 4-8% SDS-PAGE, and the membrane was blotted with anti-PDGFR- β antibody. The HRP-conjugated Goat anti-Rabbit IgG(H + L) antibody was used to detect the antibody.

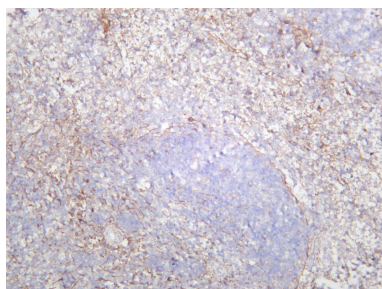
Lane 1: C6

Lane 2: NIH-3T3

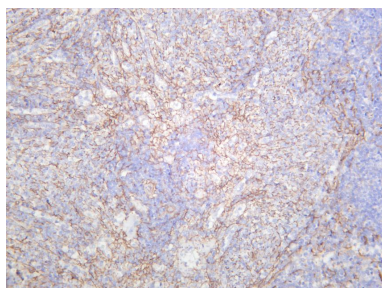
Lane 3: MG-63

Predicted band size: 124kDa

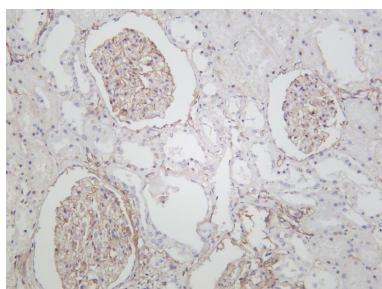
Observed band size: 150-190kDa



Mouse spleen was stained with anti-PDGFR- β rabbit antibody



Rat spleen was stained with anti-PDGFR- β rabbit antibody



Human kidney was stained with anti-PDGFR- β rabbit antibody

For Research Use Only