

ATGL Rabbit mAb (AR1372)

Key Features

Host Species:	Rabbit
Reactivity:	Human,Mouse,Rat
Applications:	WB,IHC,IF,IP,ELISA
Isotype:	IgG,Kappa
MW:	55kD (Calculated) 55kD (Observed)

Recommended Dilution Ratios

IHC:	1:200-1000
WB:	1:2000-10000
IF:	1:200-1000
ELISA:	1:5000-20000
IP:	1:50-200

Storage -15°C to -25°C/1 year (Do not lower than -25°C)

Basic Information

Clonality Monoclonal

Immunogen Information

Specificity Endogenous

Target Information

Gene name PNPLA2 ATGL FP17548
Patatin-like phospholipase domain-containing protein 2 (Adipose triglyceride lipase) (Calcium-independent phospholipase A2) (Desnutrin) (IPLA2-zeta) (Pigment epithelium derived factor) (TTS2.2) (Transport-secretion protein 2) (TTS2)

Protein Name

Organism	Gene ID	UniProt ID
Human	57104	Q96AD5
Mouse	66853	Q8BJ56
Rat	100911615	P0C548

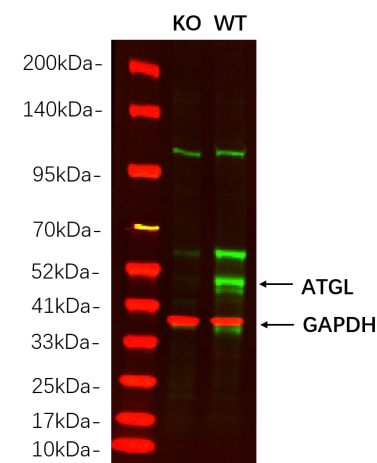
Cellular Localization

Lipid droplet. Cell membrane; Multi-pass membrane protein. Cytoplasm.

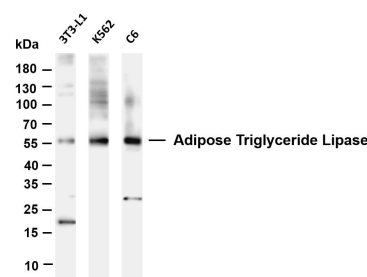
Tissue specificity

Highest expression in adipose tissue. Also detected in heart, skeletal muscle, and portions of the gastrointestinal tract. Detected in normal retina and retinoblastoma cells. Detected in retinal pigment epithelium and, at lower intensity, in the inner segments of photoreceptors and in the ganglion cell layer of the neural retina (at protein level).

Validation Data



Western blot analysis of lysates from HAP1 WT and knockout cell. (Green) primary antibody was diluted at 1:5000, 4° overnight, Dylight 800 secondary antibody was diluted at 1:10000, 37° 1 hour. (Red) GAPDH Monoclonal Antibody(5B7) antibody was diluted at 1:5000 as loading control, 4° overnight, Dylight 680 secondary antibody was diluted at 1:10000, 37° 1 hour.



Various whole cell lysates were separated by 4-20% SDS-PAGE, and the membrane was blotted with anti- ATGL antibody. The HRP-conjugated Goat anti-Rabbit IgG(H + L) antibody was used to detect the antibody.

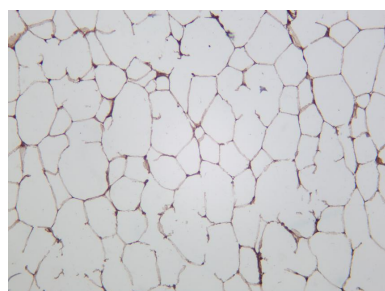
Lane 1: 3T3-L1

Lane 2: K562

Lane 3: C6

Predicted band size: 55kDa

Observed band size: 55kDa



Rat white adipose was stained with anti-ATGL rabbit antibody

For Research Use Only