

PUMA Rabbit mAb (AR1376)

Key Features

Host Species:	Rabbit
Reactivity:	Human,Mouse,Rat
Applications:	WB,IHC,IF,IP,ELISA
Isotype:	IgG,Kappa
MW:	21kD (Calculated) 21kD (Observed)

Recommended Dilution Ratios

IHC:	1:500-2000
WB:	1:2000-10000
IF:	1:200-1000
ELISA:	1:5000-20000
IP:	1:50-200

Storage

-15°C to -25°C/1 year (Do not lower than -25°C)

Basic Information

Clonality	Monoclonal
-----------	------------

Immunogen Information

Specificity	Endogenous
-------------	------------

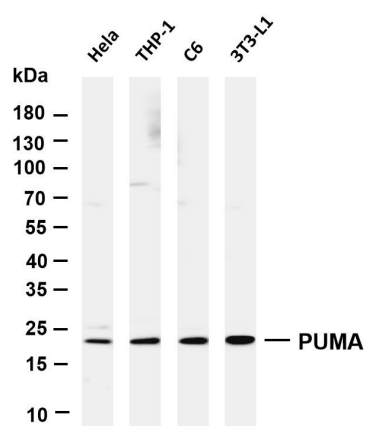
Target Information

Gene name	BBC3
Protein Name	Bcl-2-binding component 3

Organism	Gene ID	UniProt ID
Human	27113	Q9BXH1
Mouse	170770	Q99ML1
Rat	317673	Q80ZG6

Cellular Localization	Mitochondrion
Tissue specificity	Ubiquitously expressed

Validation Data



Various whole cell lysates were separated by 4-20% SDS-PAGE, and the membrane was blotted with anti-PUMA antibody. The HRP-conjugated Goat anti-Rabbit IgG(H + L) antibody was used to detect the antibody.

Lane 1: HeLa

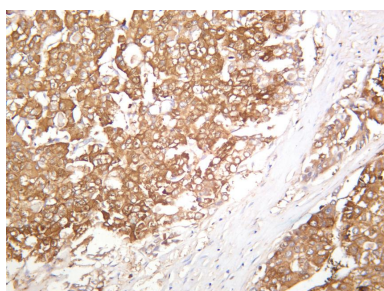
Lane 2: THP-1

Lane 3: C6

Lane 4: 3T3-L1

Predicted band size: 21kDa

Observed band size: 21kDa



Human hepatocellular carcinoma was stained with anti-PUMA rabbit antibody

For Research Use Only