

## Rpb1 Rabbit mAb (AR1378)

### Key Features

Host Species:	Rabbit
Reactivity:	Human, Mouse, Rat
Applications:	WB, IHC, IF, IP, ELISA
Isotype:	IgG, Kappa
MW:	217kD (Calculated) 250kD (Observed)

### Recommended Dilution Ratios

IHC:	1:50-200
WB:	1:2000-10000
IF:	1:200-1000
ELISA:	1:5000-20000
IP:	1:50-200

### Storage

-15°C to -25°C/1 year (Do not lower than -25°C)

### Basic Information

Clonality	Monoclonal
-----------	------------

### Immunogen Information

Specificity	Endogenous
-------------	------------

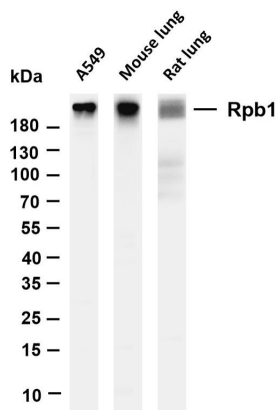
### Target Information

Gene name	POLR2A
Protein Name	DNA-directed RNA polymerase II subunit RPB1

Organism	Gene ID	UniProt ID
Human	5430	P24928
Mouse	20020	P08775

Cellular Localization	Nucleus
Tissue specificity	Fetal pancreas, Testis

## Validation Data



Various whole cell lysates were separated by 4-20% SDS-PAGE, and the membrane was blotted with anti-Rpb1 antibody. The HRP-conjugated Goat anti-Rabbit IgG(H + L) antibody was used to detect the antibody.

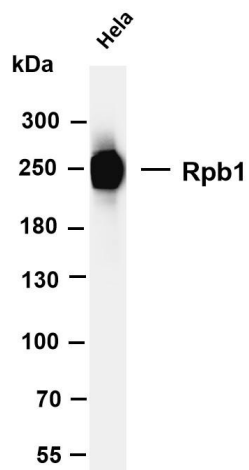
Lane 1: A549

Lane 2: Mouse lung

Lane 3: Rat lung

Predicted band size: 217kDa

Observed band size: 250kDa

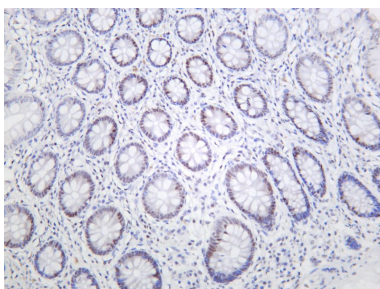


Various whole cell lysates were separated by 4-8% SDS-PAGE, and the membrane was blotted with anti-Rpb1 antibody. The HRP-conjugated Goat anti-Rabbit IgG(H + L) antibody was used to detect the antibody.

Lane 1: HeLa

Predicted band size: 217kDa

Observed band size: 250kDa



Human colon was stained with anti-Rpb1 rabbit antibody

For Research Use Only