

## RIP3 Rabbit mAb (AR1377)

### Key Features

Host Species:	Rabbit
Reactivity:	Mouse
Applications:	WB,IF,IP,ELISA
Isotype:	IgG,Kappa
MW:	53kD (Calculated) 53kD (Observed)

### Recommended Dilution Ratios

WB:	1:2000-10000
IF:	1:200-1000
ELISA:	1:5000-20000
IP:	1:50-200

### Storage

-15°C to -25°C/1 year (Do not lower than -25°C)

### Basic Information

Clonality	Monoclonal
-----------	------------

### Immunogen Information

Specificity	Endogenous
-------------	------------

### Target Information

Gene name	RIPK3 RIP3
Protein Name	Receptor-interacting serine/threonine-protein kinase 3 (EC 2.7.11.1) (RIP-like protein kinase 3) (Receptor-interacting protein 3) (RIP-3)

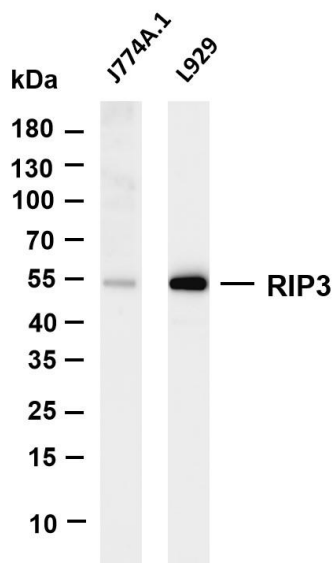
Organism	Gene ID	UniProt ID
Human	11035	Q9Y572
Mouse		Q9QZL0
Rat		Q9Z2P5

Cellular Localization	Cytoplasm, Nucleus
-----------------------	--------------------

Tissue specificity	Highly expressed in the pancreas. Detected at lower levels in heart, placenta, lung and kidney. [Isoform 3]: Expression is significantly
--------------------	--

increased in colon and lung cancers.

## Validation Data



Various whole cell lysates were separated by 4-20% SDS-PAGE, and the membrane was blotted with anti-RIP3 antibody. The HRP-conjugated Goat anti-Rabbit IgG(H + L) antibody was used to detect the antibody.

Lane 1: J774A.1

Lane 2: L929

Predicted band size: 53kDa

Observed band size: 53kDa

For Research Use Only