

S100B Rabbit mAb (AR1379)

Key Features

| | |
|---------------|--------------------------------------|
| Host Species: | Rabbit |
| Reactivity: | Human, Mouse, Rat |
| Applications: | WB, IHC, IF, IP, ELISA |
| Isotype: | IgG, Kappa |
| MW: | 11kD (Calculated) 11kD (Observed) |

Recommended Dilution Ratios

| | |
|--------|--------------|
| IHC: | 1:400-2000 |
| WB: | 1:2000-10000 |
| IF: | 1:200-1000 |
| ELISA: | 1:5000-20000 |
| IP: | 1:50-200 |

Storage

-15°C to -25°C/1 year (Do not lower than -25°C)

Basic Information

| | |
|-----------|------------|
| Clonality | Monoclonal |
|-----------|------------|

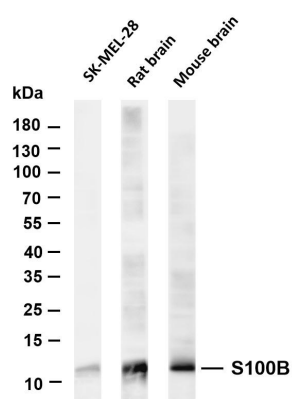
Immunogen Information

| | |
|-------------|------------|
| Specificity | Endogenous |
|-------------|------------|

Target Information

| Gene name | S100B | | |
|-----------------------|--|---------|------------|
| | Organism | Gene ID | UniProt ID |
| | Human | 6285 | P04271 |
| | Mouse | | P50114 |
| Cellular Localization | Cytoplasm, Nucleus | | |
| Tissue specificity | Although predominant among the water-soluble brain proteins, S100 is also found in a variety of other tissues. | | |

Validation Data



Various whole cell lysates were separated by 4-20% SDS-PAGE, and the membrane was blotted with anti-S100B antibody. The HRP-conjugated Goat anti-Rabbit IgG(H + L) antibody was used to detect the antibody.

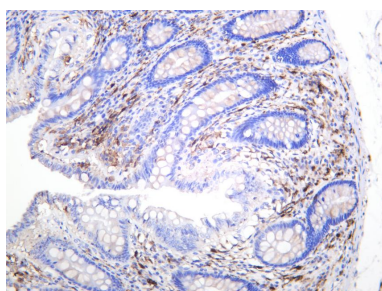
Lane 1: SKMEL-28

Lane 2: Rat brain

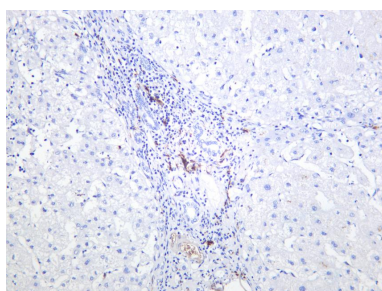
Lane 3: Mouse brain

Predicted band size: 11kDa

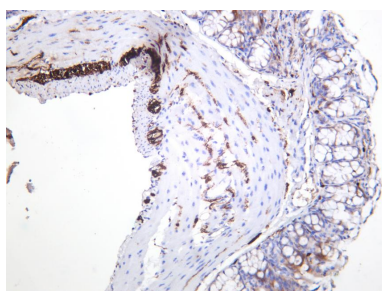
Observed band size: 11kDa



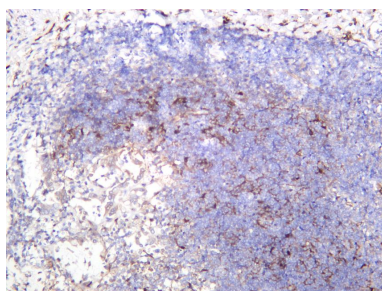
Human colon was stained with anti-S100B rabbit antibody



Human liver was stained with anti-S100B rabbit antibody



Mouse colon was stained with anti-S100B rabbit antibody



Rat colon was stained with anti-S100B rabbit antibody